

# Power Distribution Catalogue

Presenting Eldon's wide range of Power Distribution solutions.





# Power Distribution

## Wall Mounted Enclosures

<b>Wall Mounted introduction .....</b>	<b>8</b>
Wall Mounted overview .....	10
Single door enclosures, MAS .....	12

### Accessories

General accessories .....	18
Mounting plate .....	20
Profiles .....	21
Enclosure fixation .....	21
Doors .....	23
Baying .....	27
Gland plates .....	27
Cable management .....	30
Protection .....	32
Lifting .....	32
Eldon Power System accessories .....	34
Modular system .....	34

## Floor Standing Enclosures

<b>Floor Standing introduction .....</b>	<b>42</b>
Floor Standing overview .....	44
Semi-Compact enclosure, MKSL .....	46
Combinable enclosure, MCSL .....	52

### Accessories

General accessories .....	62
Enclosure fixation .....	64
Cable management .....	66
Baying .....	70
Doors .....	77
Roofs .....	80
Lifting .....	81
Earthing .....	83
Eldon Power System accessories .....	84
Incoming .....	84
Outgoing .....	92
Cabling .....	110
Busbar .....	112
Control .....	118



## Eldon can meet your Power Distribution requirements

The Eldon Power System is specifically developed for power distribution panels for indoor applications, and is based on wall mounted and floor standing enclosures which makes the system compatible with all existing accessories.

The welded frame makes the enclosure strong and rigid and thus well suited for heavy duty applications.

A wide range of accessories are available to allow for any configuration. And, since all enclosures versions are designed around the same platform, the same accessories may be used on all versions, which makes engineering easier and allows for stock reduction with panel builders and distributors. The assembly of the enclosure and accessories is easily done and will help you to reduce assembly time and remain competitive.

This enclosure range has been designed to comply with the relevant standard for empty enclosures, IEC 62208, and is regularly audited by the independent laboratory DEKRA which allows Eldon to put the KEMA-KEUR mark in the enclosures.



Eldon Corporate Movie



## Wall Mounted Enclosures

<b>Wall Mounted introduction</b> .....	<b>8</b>
Wall Mounted overview .....	10
Single door enclosures, MAS .....	12
Accessories	
General accessories .....	18
Mounting plate .....	20
Profiles .....	21
Enclosure fixation .....	21
Doors .....	23
Baying .....	27
Gland plates .....	27
Cable management .....	30
Protection .....	32
Lifting .....	32
Eldon Power System accessories .....	34
Modular system .....	34



## Wall Mounted Enclosures

The design of wall mounted enclosures within the Eldon Power System range, referred to as EPS, is based on the existing mild steel wall mounted enclosure MAS, which means that all the EPS specific accessories are compatible with the general wall mounted enclosure accessories. This makes it possible to design a wide variety of Power Distribution wall mounted solutions.

These mild steel enclosures are pre-treated with iron phosphate, demineralized and protected with epoxy-polyester powder paint RAL 7035 with structured finish, and are available in 600 and 800 mm widths.

Maximum protection for the user and the equipment is achieved thanks to the high protection degree IP 66 to IEC 60529, and IK 10 according to IEC 62262.

The wall mounted range is certified according to the most relevant international standards, such as UL508A, CSA 22.2, GOST and KEMA-KEUR, and the Eldon Power System is tested by SEMKO, according to the new standard EN 61439.

Section possibilities:

Enclosure type	Section possibilities	Section width						External compatibility		Internal compatibility
		200	400	600	800	1000	1200	Complete door	Partial door / panel system	Front panels
MAS	Modular system	-	-	x	x	-	-	x	-	x

# Wall Mounted Enclosures

## Overview

### Typical Application

Modular system



Wall mounted enclosures are ideal for small power distribution panels when internal segregation is not required. The wall mounted range allows for a variety of solutions depending on which components to install.



### Modular system

Eldon's modular system allows for dividing sections into sub-sections, where different components may be installed. Switches or measuring components can be installed on a mounting plate adjustable in depth. Modular components or terminal blocks can be mounted on DIN rails. The sub-sections are covered with front panels and an external door.



### Compatible system

Eldon's Power System, EPS, wall mounted enclosures and general wall mounted enclosures are based on the same platform design, which means that all the EPS specific accessories are compatible with the general wall mounted accessories.

### Wide range of sizes

Eldon has a wide availability of standard enclosure sizes. This allows for short delivery times and the ability to meet a wide range of customer requirements.

### Flexible system

Eldon Power System accessories are compatible with Eldon's stainless steel range. This reduces the need to keep stock and reduces the need for personnel to learn about new accessories.

### Cost effective solution

Eldon's modular frame allows for two different mounting levels: rear level for mounting of components, and front level for the front panels, which reduces the need to keep stock.

# Wall Mounted Enclosures

## Single door enclosure | MAS

IP 55, 66 | TYPE 4, 12, 13 | IK 10



**Material:**

Body: 1.4 mm for enclosures with a depth of 210 or 260 mm / 1.5 mm for enclosures with a depth of 300 or 400 mm, or if a height or width is 1000 mm or greater.  
Door: 1.5 mm / 2 mm for enclosures with a height or width of 800 mm or greater.

**Body:**

Folded and seam welded. Four 8.5 mm diameter holes for wall fixing, pressed out in 20.4 mm diameter x 2 mm depressions to allow air circulation around the rear part of the enclosure.

**Door:**

Surface mounted with 130° opening. Concealed removable hinges with captive pin. Hinges can be mounted to allow left or right hand opening. There are studs to mount door profiles MMDP included as standard. Sealing is ensured by an injected one piece polyurethane gasket.

**Lock:**

Customized lock with double grip for easy opening of the door. Double-bit 3 mm insert and 90° movement. 1000 mm high enclosures and above have espagnolette three point locking. Other inserts are available as an accessory.

**Protection:**

IP 55, 66 | TYPE 4, 12, 13 | IK 10. For outdoor installation the use of a rain hood ARF and 100% polyester paint coating is recommended. The corrosion resistance must be taken into consideration.

**Finish:**

RAL 7035 structured powder coating.

**Delivery:**

Enclosure with door, and two door mounting profiles. Plastic double-bit 3 mm key, and mounting accessories. Earthing facilities.

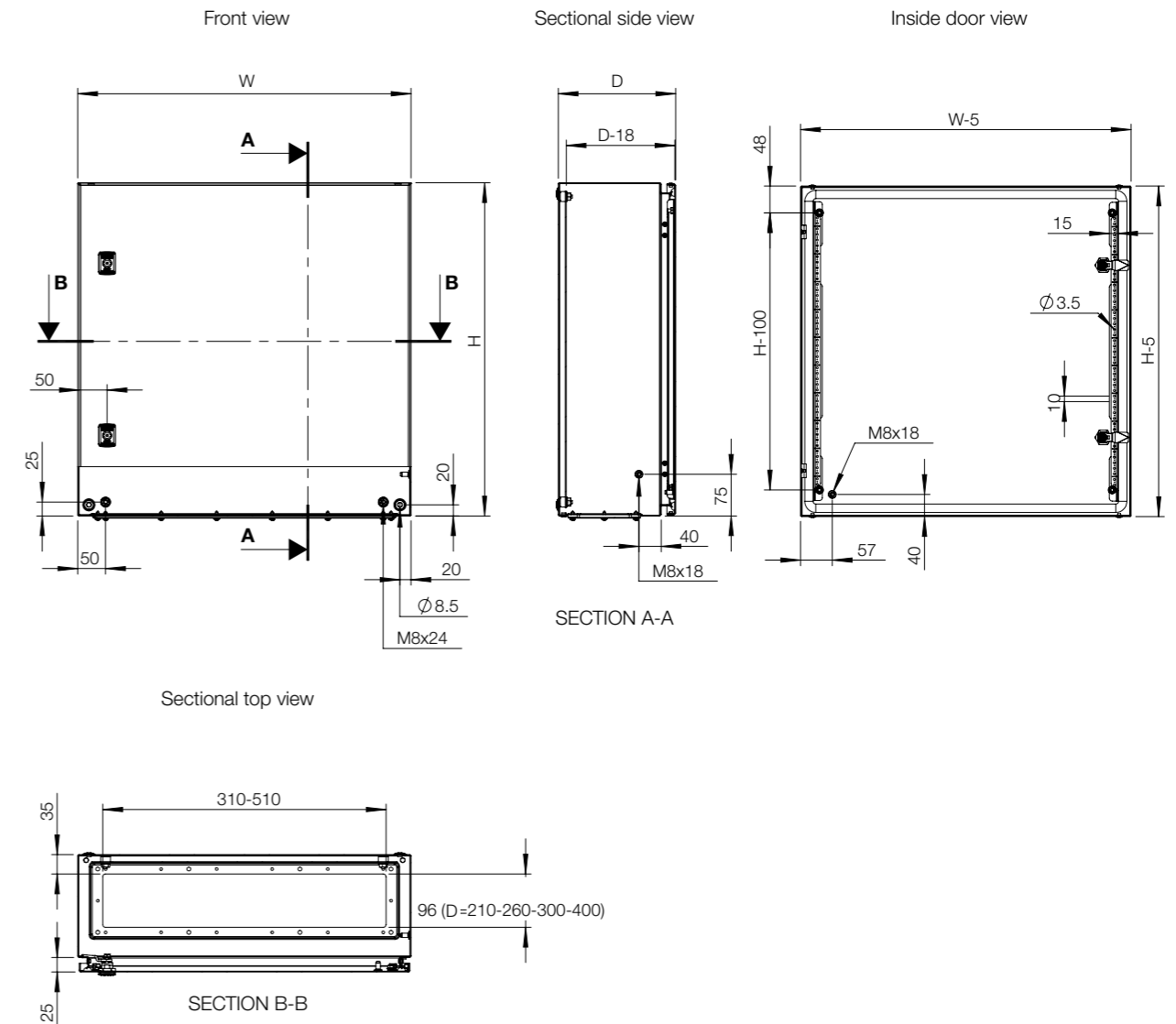


IP 55, 66 | TYPE 4, 12, 13 | IK 10

Without mounting plate

Enclosure dimensions			Gland plate			N° of locks	Item no.
H	W	D	Size	Type	Openings		
600	600	210	510x96	4	1	2	MAS0606021PER5
600	600	300	510x96	4	1	2	MAS0606030PER5
600	600	400	510x96	4	1	2	MAS0606040PER5
600	800	300	310x96	2	2	2	MAS0608030PER5
800	600	210	510x96	4	1	2	MAS0806021PER5
800	600	260	510x96	4	1	2	MAS0806026PER5
800	600	300	510x96	4	1	2	MAS0806030PER5
800	600	400	510x96	4	1	2	MAS0806040PER5
800	800	210	310x96	2	2	2	MAS0808021PER5
800	800	300	310x96	2	2	2	MAS0808030PER5
800	800	400	310x96	2	2	2	MAS0808040PER5
1000	600	260	510x96	4	1	1*	MAS1006026PER5
1000	600	300	510x96	4	1	1*	MAS1006030PER5
1000	800	260	310x96	2	2	1*	MAS1008026PER5
1000	800	300	310x96	2	2	1*	MAS1008030PER5
1000	800	400	310x96	2	2	1*	MAS1008040PER5
1000	600	300	510x96	4	1	1*	MAS1206030PER5
1000	800	300	310x96	2	2	1*	MAS1208030PER5
1000	800	400	310x96	2	2	1*	MAS1208040PER5

\* 3 point espagnolette locking.









## Accessories for Wall Mounted Enclosures

<b>General .....</b>	<b>18</b>
Components mounting .....	20
Mounting plate .....	20
Profiles .....	21
Enclosure fixation .....	21
Doors .....	23
Baying .....	27
Gland plates .....	27
Cable management .....	30
Protection .....	32
Lifting .....	32
<b>Eldon Power System .....</b>	<b>34</b>
Modular system .....	34

## Wall Mounted Enclosures

### Accessories | General

#### Mounting plates, AMP

**Description:** Steel mounting plate for wall mounted enclosures. All sizes from 800 mm and above are strengthened by folded edges. By using the AMG accessory, the mounting plate position can be adjusted to any depth. This accessory is not suitable for the AFS range of enclosures, please refer to the replacement and spare parts catalogue.

**Material:** Galvanized steel.

**Pack quantity:** 1 piece.



For enclosure		Mounting plate dimensions		Item no.
H	W	h	w	
600	600	570	550	AMP06060
600	800	570	750	AMP06080
800	600	770	550	AMP08060
800	800	770	750	AMP08080
1000	600	970	550	AMP10060
1000	800	970	750	AMP10080
1200	600	1170	550	AMP12060
1200	800	1170	750	AMP12080

#### Depth adjustment kits, AMG

**Description:** To provide depth adjustment for different accessories: mounting plate, 19" profiles and inner door. In stainless steel enclosures machining is required.

**Material:** 2 mm galvanized steel.

**Depth adjustment:** Distance to the door D-35 to 65 mm.

**Pack quantity:** 2 pairs with mounting accessories.



For enclosure		Item no.
D		
210		AMG210
260		AMG260
300		AMG300
400		AMG400

#### Depth adjustment bolts, AMTE

**Description:** For depth adjustment of the mounting plate. Metric thread M8.

**Material:** Zinc plated steel.



Length	Pack quantity	Item no.
10	50	AMTE8010
20	50	AMTE8020
30	50	AMTE8030
40	20	AMTE8040
50	20	AMTE8050
55	20	AMTE8055
100	20	AMTE8100

#### Modular chassis, AC

**Description:** Used for easy mounting of DIN-rail components with a maximum height of 68 mm. Distance between rows 125 mm. If required, the standard enclosure door can be replaced with a glazed door. Usable depth between front cover and external door: 35 mm. Adjustable depth position with AMG accessory. In stainless steel enclosure machining is required.

**Material:** DIN-rails PP0735 made of 1.2 mm galvanized steel, vertical profiles 1.5 mm mild steel, and front cover 1.5 mm mild steel.

**Finish:** RAL 7035 structured powder coating.

**Pack quantity:** Slotted front panel, two vertical profiles, top and bottom blank panels, one DIN-rail per row, and mounting accessories.



For enclosure				
H	W	N° of modules	N° of rows	Item no.
600	600	108	4	AC06060R5
800	600	162	6	AC08060R5
1000	600	189	7	AC10060R5
1000	800	266	7	AC10080R5

#### Wall mounting brackets, AW

**Description:** Mounting brackets for safe wall fixing. It includes the sealing washers to guarantee the IP rating.

**Material:** 3 mm zinc plated steel.

**Pack quantity:** 4 brackets with mounting accessories.

Item no.
AW41



#### Enclosure pole fixation, EPF

**Description:** Accessory to fix enclosures onto poles. Maximum load of 900 N.

**Material:** Galvanized steel.

**Minimum pole diameter:** 80 mm.

**Maximum pole diameter:** 250 mm.

**Pack quantity:** 2 profiles, 2 circular mounting strips for pole attachment and mounting accessories.



For Enclosure		Item no.
W		
600		EPF0600
800		EPF0800

# Wall Mounted Enclosures

## Accessories | General

### Front/rear plinths, P

**Description:** Four corner pieces with removable front covers. The side panels PA must be ordered separately. Available heights: 100 and 200 mm. Machining is required.

**Material:** 2.5 mm mild steel for corner pieces and 1.5 mm mild steel for covers.

**Finish:** RAL 7022 structure powder coating.

**Pack quantity:** 4 corner pieces and 2 front covers, with mounting accessories.

Plinth		For enclosure	
H	W		Item no.
100	600		P1060
100	800		P1080
200	600		P2060
200	800		P2080



### Side plinths, PA

**Description:** Side covers for plinth P, strengthened by folded edges.

**Material:** 1.5 mm mild steel.

**Finish:** RAL 7022 structure powder coating.

**Pack quantity:** 2 pieces for height 100 mm and 4 pieces for height 200 mm.

Plinth		For enclosure	
H	D		Item no.
100	260		PA1026
100	300		PA1030
100	400		PA1040
200	260		PA2026
200	300		PA2030
200	400		PA2040



### Transparent doors, ADT

**Description:** To replace the standard door, it provides a clear view of the components installed inside the enclosure. The lock(s) are interchangeable with all Eldon's standard lock(s).

**Material:** 1.5 mm mild steel / 2 mm for enclosures with a height or width of 800 mm or greater and 3 mm transparent acrylic glass.

**Finish:** RAL 7035 structured powder coating.

**Protection:** IP 55.

**Pack quantity:** 1 door.

For enclosure		Viewing area		N° of locks	Item no.
H	W	h	w		
600	600	459	443	2	ADT06060R5
800	600	659	443	2	ADT08060R5
1000	600	859	427	1*	ADT10060R5
1000	800	859	627	1*	ADT10080R5
1200	600	1059	427	1*	ADT12060R5
1200	800	1059	627	1*	ADT12080R5

\* 3 point espagnolette locking.



### Glazed doors with clear glass, ADC

**Description:** To replace the standard door, it provides a clear view of the components installed inside the enclosure. The lock(s) are interchangeable with all Eldon's standard lock(s).

**Material:** 1.5 mm mild steel / 2 mm for enclosures with a height or width of 800 mm or greater and 4 mm clear safety glass.

**Finish:** RAL 7035 structured powder coating.

**Protection:** IP 55 | TYPE 12, 13.

**Pack quantity:** 1 door.

For enclosure		Viewing area		N° of locks	Item no.
H	W	h	w		
600	600	459	443	2	ADC06060R5
800	600	659	443	2	ADC08060R5
1000	600	859	427	1*	ADC10060R5
1000	800	859	627	1*	ADC10080R5
1200	600	1059	427	1*	ADC12060R5
1200	800	1059	627	1*	ADC12080R5

\* 3 point espagnolette locking.



# Wall Mounted Enclosures

## Accessories | General

### Inserts, ALI

**Description:** Inserts to replace the standard double-bit 3 mm insert in the standard polyamide lock.

**Material:** Polyamide.

**Pack quantity:** 1 piece.



Description	Item no.
Double-bit 3 mm	ALI503
Double-bit 5 mm	ALI505
Square 7mm	ALI523
Triangular 8mm	ALI524
Square 8 mm	ALI525
Slotted 2x4mm	ALI528

### Locks, ALL

**Description:** Alternative locks to replace the standard one.

**Pack quantity:** 1 piece.



Description	Type	Protection	Item no.
ADA/ACA lock with cylinder	Ronis key n° C21323	IP 65	ALL506
ADAB/ACB lock with cylinder	Ronis key n° C21323	IP 65	ALL507
Chrome plated lock with cylinder	Ronis key n° M21323	IP 65	ALL508
Polyamide lock with cylinder	Key 5333	IP 55	ALL509
Eldon lock with cylinder	Ronis key n° C21323	IP 65	ALL510

### Handles, ALT

**Description:** Alternative handles to replace the standard lock.

**Pack quantity:** 1 piece.



Description	Protection	Item no.
Plastic handle	IP 65	ALT560
Chrome plated T-handle with cylinder lock, key M21323	IP 65	ALT561
Chrome plated handle with cylinder lock, key M21323	IP 65	ALT562
Plastic handle with cylinder lock, Key 5333	IP 65	ALT563

### Padlocking, PLC

**Description:** The padlocking cover is mounted over the existing standard lock. The standard lock is totally covered and not accessible when padlock is fitted. Maximum padlock bow diameter of 10 mm.

**Material:** Stainless steel.

**Pack quantity:** 1 piece.



Item no.
PLC01

### Keys, LSK

**Description:** Key with Eldon logo. Easy to use design, providing a good grip.

**Pack quantity:** 1 piece.



Description	Material	Item no.
Double-bit 3 mm	Plastic	LSK502
Double-bit 3 mm	Metalic	LSK503
Double-bit 5 mm	Metalic	LSK505
Square 7 mm	Metalic	LSK523
Square 8 mm	Metalic	LSK524
Triangle 7 mm	Metalic	LSK526
Triangle 8 mm	Metalic	LSK527

### Multi key, LSMK

**Description:** Multi-Key function with Eldon logo and a different key in every end: double-bit 5 mm, square 8 mm, triangle 8 mm and a standard hexagonal adaptor to use with the screw ends.

**Material:** Steel.

**Pack quantity:** 1 piece.



Item no.
LSMK01

### Hinges, MMH

**Description:** Door hinges that allow the door to open 180°. Machining is required.

**Material:** Zinc plated steel.

**Pack quantity:** Hinges with mounting accessories.



For enclosure		Item no.
H		
≤ 800mm		MMH02
>800mm		MMH03

## Wall Mounted Enclosures

### Accessories | General

#### Door stop, ADO

**Description:** Door stop to fit all wall mounted enclosure dimensions. To secure the door in an open position to the degree that meets user requirements. Door stop can be mounted at the top or bottom of the enclosure. Machining is required.

**Pack quantity:** 1 piece with mounting accessories.

Material	Item no.
Zinc plated steel	ADO202



#### Door switch, ADSW

**Description:** Door switch to activate any electrical device (lighting, signalling, alarms, etc.) designed for wall mounted enclosures. Cable entry M20. In stainless steel enclosures, machining is required.

**Switch capacity:** 6A / 230V.

**Approvals:** CE, CSA, EAC, UL.

**Pack quantity:** 1 piece with mounting accessories.

Item no.
ADSW01



#### Door horizontal profiles, DHP

**Description:** Horizontal profiles with 25 mm hole pattern of 4.5 mm and 6.5 mm of diameter for the attachment and installation of equipment. They fit directly onto the MMDP door mounting profiles. They can also be mounted vertically onto two horizontal profiles. For doors with espagnolette locking system, profiles must be cut where indicated.

**Material:** 1.5 mm galvanized steel.

**Pack quantity:** 5 pieces with mounting accessories.

For enclosure		Item no.
W		
600		DHP060
800		DHP080



#### Document pocket, DRA

**Description:** Self adhesive, for DIN A4.

**Usable depth:** 30 mm.

**Material:** Thermoplastic.

**Finish:** RAL 7035.

**Pack quantity:** 1 document pocket with double sided tape.

Item no.
DRA04



#### Gland plate combining gaskets, AGC

**Description:** To be used when a wall mounted enclosures combination (MAS/MAD/MAP) is needed. Combining gaskets are to be used to bay gland plate openings together.

**Material:** 8 mm polyethylene foam.

**Pack quantity:** 2 pieces, and combination mounting accessories.

Size	For opening	Item no.
2	310 x 96	AGC02
4	510 x 96	AGC04



#### Ventilated gland plates, AFR

**Description:** Louvered plate, pressed out 5 mm.

**Material:** 1.4 mm mild steel.

**Finish:** RAL 7035 structured powder coating.

**Protection:** IP 23, in bottom or vertical position.

**Pack quantity:** 1 piece.

Size	For opening	Item no.
2	310 x 96	AFR02R5
4	510 x 96	AFR04R5



# Wall Mounted Enclosures

## Accessories | General

### Ventilated gland plates with fly-net, AFG

**Description:** Louvered plate, pressed out 5 mm with fly-net.  
**Material:** 1.4 mm mild steel.  
**Finish:** RAL 7035 structured powder coating.  
**Protection:** IP 43, in bottom or vertical position.  
**Pack quantity:** 1 piece.

Size	For opening	Item no.
2	310 x 96	AFG02R5
4	510 x 96	AFG04R5



### Ventilated gland plates with filter, AFV

**Description:** Louvered plate, pressed out 5 mm with filter.  
**Material:** 1.4 mm mild steel.  
**Finish:** RAL 7035 structured powder coating.  
**Protection:** IP 53, in bottom or vertical position.  
**Pack quantity:** 1 piece.

Size	For opening	Item no.
2	310 x 96	AFV02R5
4	510 x 96	AFV04R5



### Adapter gland plates, AFA

**Description:** Adapts FL gland plates to the wall mounted, steel enclosures gland opening.  
**Material:** 1.4 mm mild steel.  
**Finish:** RAL 7035 structured powder coating.  
**Pack quantity:** 1 piece.

Size	For opening	N° of FL openings	Item no.
2	310 x 96	1xFL21	AFA02R5
4	510 x 96	2xFL21	AFA04R5



### Plastic gland plates, EHTC

**Description:** Gland plate suitable for leading through cables as well as different types of tubing. To be installed directly to the adapter gland plate AFA02 / AFA04.  
**Material:** Different types of polymers reinforced with a steel plate. Halogen free and UV resistant.  
**Protection:** IP 65.  
**Finish:** RAL 7035.  
**Pack quantity:** 1 piece with mounting accessories.

Size	Item no.
FL21	EHTC2125G
FL21	EHTC213G
FL21	EHTC2135G
FL21	EHTC2150G

Cable / Tube diameter (mm)	EHTC2125G	EHTC213G	EHTC2135G	EHTC2150G
5-7	4		4	
6-10		3		
6-14			12	
7-12				49
7-13				
8-14 / 7-10	16			
10-14			16	
12-18			2	
14-20 / 5-10	4			
15-25				1
17-32			1	
20-26 / 12-15	1			
24-54		2		
30-59		1		



### Gland plates with knock-outs, AFK

**Description:** Gland plates with knock-outs according to table.  
**Material:** 1.4 mm mild steel.  
**Finish:** RAL 7035 structured powder coating.  
**Pack quantity:** 1 piece.

Size	For opening	M16	M20	M25	M32	Item no.
2	310 x 96	9	5	4	2	AFK21R5
2	310 x 96	21	-	1	1	AFK22R5
4	510 x 96	27	5	4	2	AFK41R5
4	510 x 96	18	14	3	1	AFK42R5



## Wall Mounted Enclosures

### Accessories | General

#### Plastic cable glands, CPG

**Description:** Traditional cable fittings. Known for excellent strain relief even while providing a high protection class. Plastic lock nuts for fixation are included in the delivery.

**Material:** Fitting body made of polyamide PA6, and sealing made of neoprene.

**Temperature resistance:** -25° C to +100° C.

**Flammability:** V-0 according to UL94.

**Finish:** RAL 7035.

**Protection:** IP 68 at 5 bar.

**Pack quantity:**



Thread	Cable Size	Pack quantity	Item no.
M12x1.5	3 - 6.5	100	CPG12
M16x1.5	5 - 10	50	CPG16
M20x1.5	6 - 12	50	CPG20
M25x1.5	13 - 18	50	CPG25
M32x1.5	18 - 25	20	CPG32
M40x1.5	22 - 32	10	CPG40
M50x1.5	30 - 38	5	CPG50
M63x1.5	34 - 44	5	CPG63

#### Simple protection cables entry, CES

**Description:** Simple grommet manufactured in a rubber-like material. The installation does not require tools. The "pushout" membrane is a permanent seal until it is penetrated by a cable or pipe. It is equipped with a sock that closes tight around the cable and allows for it to be moved around like a "joy-stick" in the opening without endangering the IP, so it works extremely well with cables passing through at an angle. Suitable for holes in materials of 0.5 to 4.5 mm thickness.

**Material:** TPE (thermoplastic elastomer), halogen free.

**Temperature resistance:** -50° C to +125° C.

**Finish:** RAL 7035.

**Protection:** IP 67.



Metric	Cable diameter (mm)	Hole diameter (mm)	H	H1	H2	Diameter (mm)	Pack quantity	Item no.
M16	5-10	16.5	11.0	4.0	6.75	23.5	50	CES16
M20	6-13	20.5	11.0	4.0	6.75	27.5	50	CES20
M25	8-17	25.5	11.0	4.0	6.75	39.5	50	CES25
M32	12-24	32.5	11.0	4.0	6.75	39.5	25	CES32

#### Cable anchorage glands, CAG

**Description:** Two-component grommet with membrane seal and cable anchorage. The installation does not require tools, it is self-adjusting to its surrounding wall thickness and click-fixed in place. Because of its compact design it only extends 5.7 mm outside the enclosure on which it is mounted. The "pushout" membrane is a permanent seal until it is penetrated by a cable or pipe. Suitable for holes in materials of 0.7 to 3 mm thickness.

**Material:** TPE and polyamide 66, halogen free.

**Temperature resistance:** -20° C to +125° C.

**Finish:** RAL 7035.

**Protection:** IP 67/65, waterproof.

**Pack quantity:** 50 pieces.



Metric	Cable diameter (mm)	Hole diameter (mm)	H	H2	Diameter (mm)	Item no.
M20	7-11	20.5	17-20	5.7	34-37	CAG20
M25	7-13	25.5	17-20	5.7	39-42	CAG25

#### Double protection cables entry, CED

**Description:** The rubber grommet is very simple to use. The installation does not require tools, which in turn means lower work cost. The "pushout" membrane is a permanent seal until it is penetrated by a cable or pipe. Suitable for holes in materials of 0.5 to 4 mm thickness.

**Material:** EPDM, halogen free.

**Temperature resistance:** -40° C to +110° C.

**Finish:** RAL 7035.

**Protection:** IP 67.



Metric	Cable diameter (mm)	Hole diameter (mm)	H	H1	Diameter (mm)	Pack quantity	Item no.
M12	4-7	12.5	12.8	5.6	20.0	50	CED12
M16	5-9	16.5	17.7	11.0	21.0	50	CED16
M20	8-13	20.5	20.0	13.4	25.5	50	CED20
M25	11-17	25.5	21.3	15.3	30.5	50	CED25
M32	15-20	32.5	24.6	18.6	38.5	25	CED32
M40	19-28	40.5	29.5	21.7	48.5	25	CED40
M50	27-35	50.5	34.8	25.0	60.5	10	CED50



## Wall Mounted Enclosures

### Accessories | General

#### Rain hoods, ARF

**Description:** To be fitted as an outdoor shelter on single mounted enclosures. The roof is slightly sloped and has a dripstrip. Machining is required. It increases the enclosure dimension in H:60 mm, D:20 mm and W:20 mm.

**Material:** 1.5 mm mild steel.

**Finish:** RAL 7035 structured powder coating.

**Pack quantity:** 1 rain hood with mounting accessories.

**Additional information:** If the rain hood is exposed to high levels of UV radiation, the ARF should be coated with 100% polyester paint. This can be ordered as a special accessory.



For enclosure		
W	D	Item no.
600	210	ARF06021R5
600	260	ARF06026R5
600	300	ARF06030R5
600	400	ARF06040R5
800	210	ARF08021R5
800	260	ARF08026R5
800	300	ARF08030R5
800	400	ARF08040R5

#### Lifting eyes, AL

**Description:** M12 thread. Complies with DIN 580 lifting requirements. Machining is required.

**Material:** Steel.

**Pack quantity:** 2 eye-bolts, 2 reinforcements and mounting accessories.

Item no.
AL9301



# Wall Mounted Enclosures

## Accessories | Modular system

### Modular system frames, MSMSM

- Description:** Two single vertical profiles, which can be used both for front covers and assembly of components. A cost effective solution for panel builders, reducing assembly time, which also enables assembly outside the enclosure.
- Material:** 1.5 mm steel.
- Finish:** RAL 7035.
- Pack quantity:** 1 kit.
- Requirements:** To be assembled on MAS-ASR enclosures.



For enclosure		Item no.
H	W	
600	600	MSMSM0606
600	800	MSMSM0608
800	600	MSMSM0806
800	800	MSMSM0808
1000	600	MSMSM1006
1000	800	MSMSM1008
1200	600	MSMSM1206
1200	800	MSMSM1208

### Mounting plates, MSMPN

- Description:** Mounting plate for installation of breakers. Suitable for left and right hand connections.
- Material:** 1.5 mm galvanized steel.
- Pack quantity:** 1 piece with mounting material.
- Requirements:** To be assembled on MSFP, or on MSMSM/MSMSF with MSMPA01.



Plain		Mounting plate dimensions		Item no.
H	W	h	w	
50	600	46	470	MSMPN0506
50	800	46	670	MSMPN0508
100	600	96	470	MSMPN1006
100	800	96	670	MSMPN1008
150	600	146	470	MSMPN1506
150	800	146	670	MSMPN1508
200	600	196	470	MSMPN2006
200	800	196	670	MSMPN2008
250	600	246	470	MSMPN2506
250	800	246	670	MSMPN2508
300	600	296	470	MSMPN3006
300	800	296	670	MSMPN3008
400	600	396	470	MSMPN4006
400	800	396	670	MSMPN4008
450	600	446	470	MSMPN4506
450	600	446	670	MSMPN4508
500	600	496	470	MSMPN5006
500	800	496	670	MSMPN5008
600	600	596	470	MSMPN6006
600	800	596	670	MSMPN6008
600	1000	596	870	MSMPN6010

Horizontal opening		Mounting plate dimensions		Item no.
H	W	h	w	
100	600	96	470	MSMPN1006H
100	800	96	670	MSMPN1008H

Vertical opening		Mounting plate dimensions		Item no.
H	W	h	w	
150	600	146	470	MSMPN1506V
150	800	146	670	MSMPN1508V
200	600	196	470	MSMPN2006V
200	800	196	670	MSMPN2008V
250	600	246	470	MSMPN2506V
250	800	246	670	MSMPN2508V
300	600	296	470	MSMPN3006V
300	800	296	670	MSMPN3008V
400	600	396	470	MSMPN4006V
400	800	396	670	MSMPN4008V
450	600	446	470	MSMPN4506V
450	800	446	670	MSMPN4508V
500	600	496	470	MSMPN5006V
500	800	496	670	MSMPN5008V
600	600	596	470	MSMPN6006V
600	800	596	670	MSMPN6008V

## Wall Mounted Enclosures

### Accessories | Modular system

#### DIN rails, MSDR

**Description:** Cut to size DIN rail ready to be installed. The simplified panel design makes procurement easier and reduces assembly time.

**Material:** Galvanized steel.

**Pack quantity:** 5 pieces.

**Requirements:** To be assembled on MSFP with the holders MSADP or with the adjustable brackets MSMPA01, or on MSMSM / MSMSF with the fixed brackets MSMPF01 or with the adjustable brackets MSMPA01.

For enclosure		Item no.
W		
600		MSDR0600
800		MSDR0800



#### Fixed brackets, MSMPF01

**Description:** A bracket to mount a DIN-rail to allow for mounting of modular components in the modular system profiles. Cost effective solution for panelbuilders.

**Material:** 2.5 mm galvanized steel.

**Pack quantity:** 1 pair.

**Requirements:** To be assembled on MSMSM / MSMSF

Item no.
MSMPF01



#### Adjustable brackets, MSMPA01

**Description:** A bracket to mount a DIN-rail or mounting plate which is adjustable in depth to allow for mounting of components in different sizes in the desired position. Panel builders can hold less stock and engineer with fewer item numbers thanks to the adjustable depth design.

**Material:** 2.5 mm galvanized steel, zamak.

**Pack quantity:** 2 pairs.

**Requirements:** To be assembled on MSFP, or on MSMSM/MSMSF.

Item no.
MSMPA01



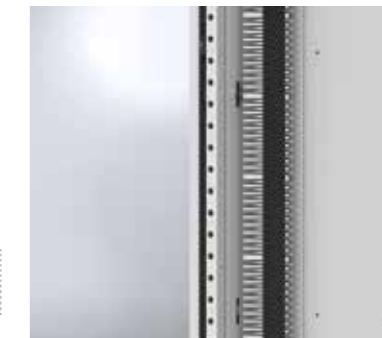
#### Finger guards, MSFG

**Description:** Accessory to avoid the access to the live parts through the cable openings in the internal side panels and mounting plates.

**Material:** ABS.

**Delivery:** 2 pieces, 93 mm.

Item no.
MSFG2000



#### Slotted front panels, MSMCP

**Description:** Slotted front panel for modular assemblies. Provided with one DIN rail per row for modular components. It has a top and bottom bending to provide extra rigidity.

**Material:** 1.25 mm steel.

**Finish:** RAL 7035 structured powder coating.

**Delivery:** 1 piece with mounting material.

**Requirements:** To be assembled on MSFCP, or on MSMSM / MSMSF.

H	W	No. of rows	DIN modules	Item no.
150	600	1	25	MSMCP1506R5
150	800	1	36	MSMCP1508R5
200	600	1	25	MSMCP2006R5
200	800	1	36	MSMCP2008R5
300	600	1	25	MSMCP3006-1R5
300	800	1	36	MSMCP3008-1R5
300	600	2	50	MSMCP3006-2R5
300	800	2	72	MSMCP3008-2R5
450	600	3	75	MSMCP4506R5
450	800	3	108	MSMCP4508R5
600	600	4	100	MSMCP6006R5
600	800	4	144	MSMCP6008R5



#### Blanking plates for DIN slots, TB13G

**Description:** Blanking plate to cover the unused space in the DIN slots. Can be divided per half a module.

**Material:** Plastic.

**Finish:** RAL 7035.

**Pack quantity:** 10 pieces of blanking plates 13 mod. Overall length 234 mm.

Item no.
TB13G



# Wall Mounted Enclosures

## Accessories | Modular system

### Plain front panels, MSMBP

- Description:** Plain front panel for modular assemblies. It has a top and bottom bending to provide extra rigidity.
- Material:** 1.25 mm steel.
- Finish:** RAL 7035 structured powder coating.
- Delivery:** 1 piece with mounting material.
- Requirements:** To be assembled on MSFCP or on MSMSM / MSMSF.

H	W	Front panel dimensions		Item no.
		h	w	
50	600	49	503	MSMBP0506R5
50	800	49	703	MSMBP0508R5
100	600	99	503	MSMBP1006R5
100	800	99	703	MSMBP1008R5
150	600	149	503	MSMBP1506R5
150	800	149	703	MSMBP1508R5
200	600	199	503	MSMBP2006R5
200	800	199	703	MSMBP2008R5
250	600	249	503	MSMBP2506R5
250	800	249	703	MSMBP2508R5
300	600	299	503	MSMBP3006R5
300	800	299	703	MSMBP3008R5
400	600	399	503	MSMBP4006R5
400	800	399	703	MSMBP4008R5
450	600	449	503	MSMBP4506R5
450	800	449	703	MSMBP4508R5
500	600	499	503	MSMBP5006R5
500	800	499	703	MSMBP5008R5
600	600	599	503	MSMBP6006R5
600	800	599	703	MSMBP6008R5





## Floor Standing Enclosures

<b>Floor Standing introduction</b> .....	<b>42</b>
Floor Standing overview.....	44
Semi-Compact enclosure, MKSL.....	46
Combinable enclosure, MCSL.....	52

### Accessories

General accessories.....	62
Enclosure fixation.....	64
Cable management.....	66
Baying.....	70
Doors.....	77
Roofs.....	80
Lifting.....	81
Earthing.....	83

Eldon Power System accessories.....	84
Incoming.....	84
Outgoing.....	92
Cabling.....	110
Busbar.....	112
Control.....	118



## Floor Standing Enclosures

The design of floor standing enclosures within the Eldon Power System range, referred to as EPS, is based on the existing mild steel floor standing enclosure MKS and MCS, and allows for building Power Distribution and Automation Control panels.

These mild steel enclosures are epoxy polyester coated in light grey, RAL 7035.

The Enclosures in the Eldon Power System range are equipped with different sections for incoming and outgoing, busbar and cabling. The system allows producing fix or plug-in solutions.

In addition, the floor standing range is certified according to the most relevant international standards, such as UL508A, CSA 22.2, GOST and KEMA KEUR. Eldon Power System is tested by SEMKO, according to the new standard EN 61439. Customers can be assured that the enclosures are thoroughly tested and meet all safety regulations.

### Eldon Power System Segregation

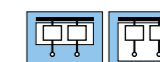
With the Eldon Power System different levels of segregation can be achieved in accordance with EN 61439.

**Form 1:** There are not any internal separation.



**Form 2:** Separation of busbars from the functional units:

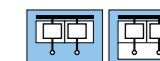
**Form 2a:** Terminals for external conductors not separated from busbars;



**Form 2b:** Terminals for external conductors separated from busbars.

**Form 3:** The Form 2 separations, with additional separation of all functional units from one another and separation of terminals for external conductors from the functional units:

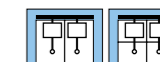
**Form 3a:** Terminals for external conductors not separated from busbars;



**Form 3b:** Terminals for external conductors separated from busbars.

**Form 4:** The Form 2 separations, additional separation of terminals for external conductors from those of any other functional unit and the busbar:

**Form 4a:** Terminals for external conductors in the same compartment as the associated functional unit;



**Form 4b:** Terminals for external conductors not in the same compartment as the associated functional unit, but in individual spaces or compartments.

Section possibilities:

Enclosure type	Section possibilities	Section width						External compatibility		Internal compatibility
		200	400	600	800	1000	1200	Complete door	Partial door / Panel system	Front panels
MKSL	Modular system	-	-	x	x	-	-	x	-	x
	Cabling	-	x	-	-	-	-	x	x	-
	Busbar	x	-	-	-	-	-	-	x	-
MCSL	Incoming	-	-	x	x	x	-	x	x	x
	Modular system	-	-	x	x	-	-	x	-	x
	Fix system	-	-	x	x	-	-	x	x	x
	Plug-in system	-	-	x	-	-	-	x	x	-
	Cabling	-	x	x	-	-	-	x	x	-
	Busbar	x	-	-	-	-	-	-	x	-
	Control	-	-	x	x	x	x	x	-	-

# Floor Standing Enclosures

## Overview

### Typical Applications

Building Power Distribution

Industry Power Distribution

Motor Control Centers (MCC)



Floor standing enclosures are ideal for power distribution panels when internal segregation is required. Eldon Power System is available for semi-compact MKSL plus combinable enclosures MCSL, and can be divided into other vertical sections with the standard accessories, maintaining the hole patterns in all sections. Vertical sections can be divided into further sub-sections. These sub-sections can be covered by using panels and doors creating the required configuration met.



### Traditional fix system

Power distribution panels which do not require high supply dependability are covered with the traditional fix system. Eldon supplies different enclosures for the main switchgear in a building, using the fix system and internal front panels. It is possible to use transparent doors, improving the aesthetic and information about panel status. Plain doors are used to cover the cabling space and to install the measurement equipment.



### Plug-in solution

In switchgear panels in which the dependability is important but the cost must be taken in consideration, the Eldon Plug-in solution is the perfect choice. In this application the plug-in compartments can be populated with different type of components based on user requirements.



### Compatible system

Eldon Power System floor standing enclosures and general floor standing enclosures are based on the same platform design making all accessories compatible.



### Cost effective solution

Eldon Power System allows different levels of internal segregation (Form 1 up to Form 4) allowing for cost effective design of a wide variety of power distribution solutions.



### According to EN 61439-1

Eldon Power System has been tested by SEMKO, in accordance with the new standard EN 61439. This means that the customer can manufacture fully type-tested low voltage switchgear and control gear.



### Flexible system

Eldon Power System allows for different configurations with different vertical sections (incoming and outgoing, busbar and cabling) to meet all customer requirements.

# Floor Standing Enclosures

## Semi-Compact enclosure | MKSL

IP 44, 55, 66 | TYPE 4, 12,13 | IK 10



**Material:**

Body: 1.35 mm painted steel. Rear and roof panels: 1.5 mm painted steel.

**Body:**

Four times folded and seam-welded frame. Integrated double row hole pattern.

**Rear panel:**

Fitted by M6 torx screws. Standard facilities for rear door mounting.

**Roof panel:**

Removable.

**Earthing:**

All panels are earthed through their fittings and are equipped with a separate earthing stud.

**Finish:**

RAL 7035 structured powder coating.

**Protection:**

IP 44, 55, 66 | TYPE 4, 12, 13 | IK 10, depending of the doors configuration

**Delivery:**

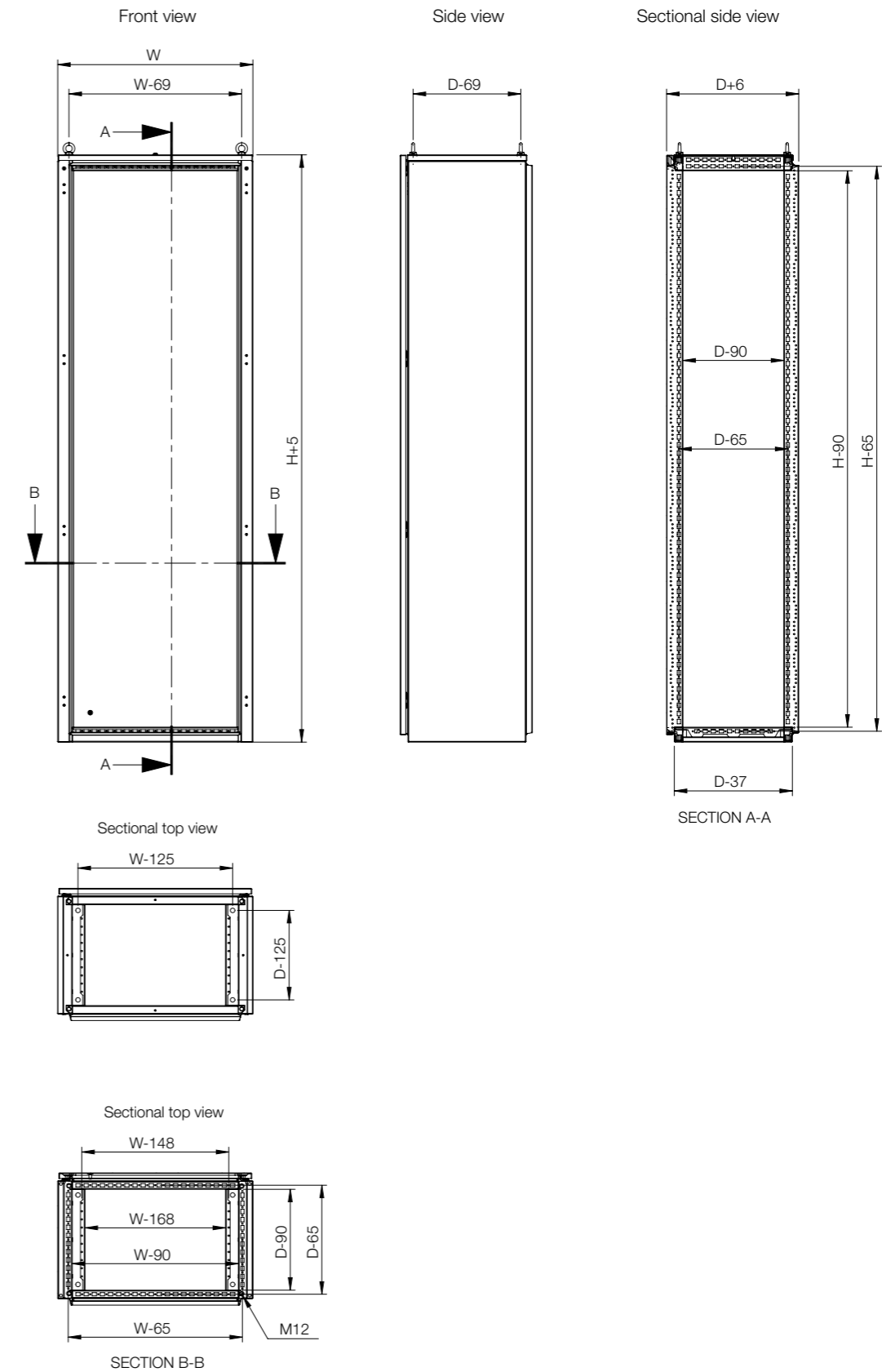
Body with rear panel and roof panel. Delivery also includes earthing bolts. Delivered on a pallet with identical width of the enclosure. All packing material is recyclable.



**IP 44, 55, 66 | TYPE 4, 12,13 | IK 10**

Without mounting plate

Enclosure dimensions				Item no.
H	W	D		
1800	600	400		MKSL18064R5
1800	800	400		MKSL18084R5
1800	1000	400		MKSL18104R5
1800	1200	400		MKSL18124R5
2000	600	400		MKSL20064R5
2000	800	400		MKSL20084R5
2000	1000	400		MKSL20104R5
2000	1200	400		MKSL20124R5



## Accessories selection matrix I MKSL



Enclosure				Fixing				
	H	W	D	Front/rear plinths (100 mm height)	Side plinths (100 mm height)	Front/rear plinths (200 mm height)	Side plinths (200 mm height)	Front/rear ventilated plinths (100 mm height)
MKSL18064R5	1800	600	400	PF1060	PS1040	PF2060	PS2040	PV1060
MKSL18084R5	1800	800	400	PF1080	PS1040	PF2080	PS2040	PV1080
MKSL18104R5	1800	1000	400	PF1100	PS1040	PF2100	PS2040	PV1100
MKSL18124R5	1800	1200	400	PF1120	PS1040	PF2120	PS2040	PV1120
MKSL20064R5	2000	600	400	PF1060	PS1040	PF2060	PS2040	PV1060
MKSL20084R5	2000	800	400	PF1080	PS1040	PF2080	PS2040	PV1080
MKSL20104R5	2000	1000	400	PF1100	PS1040	PF2100	PS2040	PV1100
MKSL20124R5	2000	1200	400	PF1120	PS1040	PF2120	PS2040	PV1120



Enclosure				Cable		Divider			
	H	W	D	Plain bottom plates	Ventilated bottom plates	Vertical dividers	Vertical divider bars	Depth divider bars	Horizontal dividers
MKSL18064R5	1800	600	400	CBP064	CVB0604	CDV1800R5	VB1800	VBD400	CDHK600
MKSL18084R5	1800	800	400	CBP084	CVB0804	CDV1800R5	VB1800	VBD400	CDHK800
MKSL18104R5	1800	1000	400	CBP104	CVB1004	CDV1800R5	VB1800	VBD400	-
MKSL18124R5	1800	1200	400	CBP124	-	CDV1800R5	VB1800	VBD400	-
MKSL20064R5	2000	600	400	CBP064	CVB0604	CDV2000R5	VB2000	VBD400	CDHK600
MKSL20084R5	2000	800	400	CBP084	CVB0804	CDV2000R5	VB2000	VBD400	CDHK800
MKSL20104R5	2000	1000	400	CBP104	CVB1004	CDV2000R5	VB2000	VBD400	-
MKSL20124R5	2000	1200	400	CBP124	-	CDV2000R5	VB2000	VBD400	-

## Accessories selection matrix I MKSL



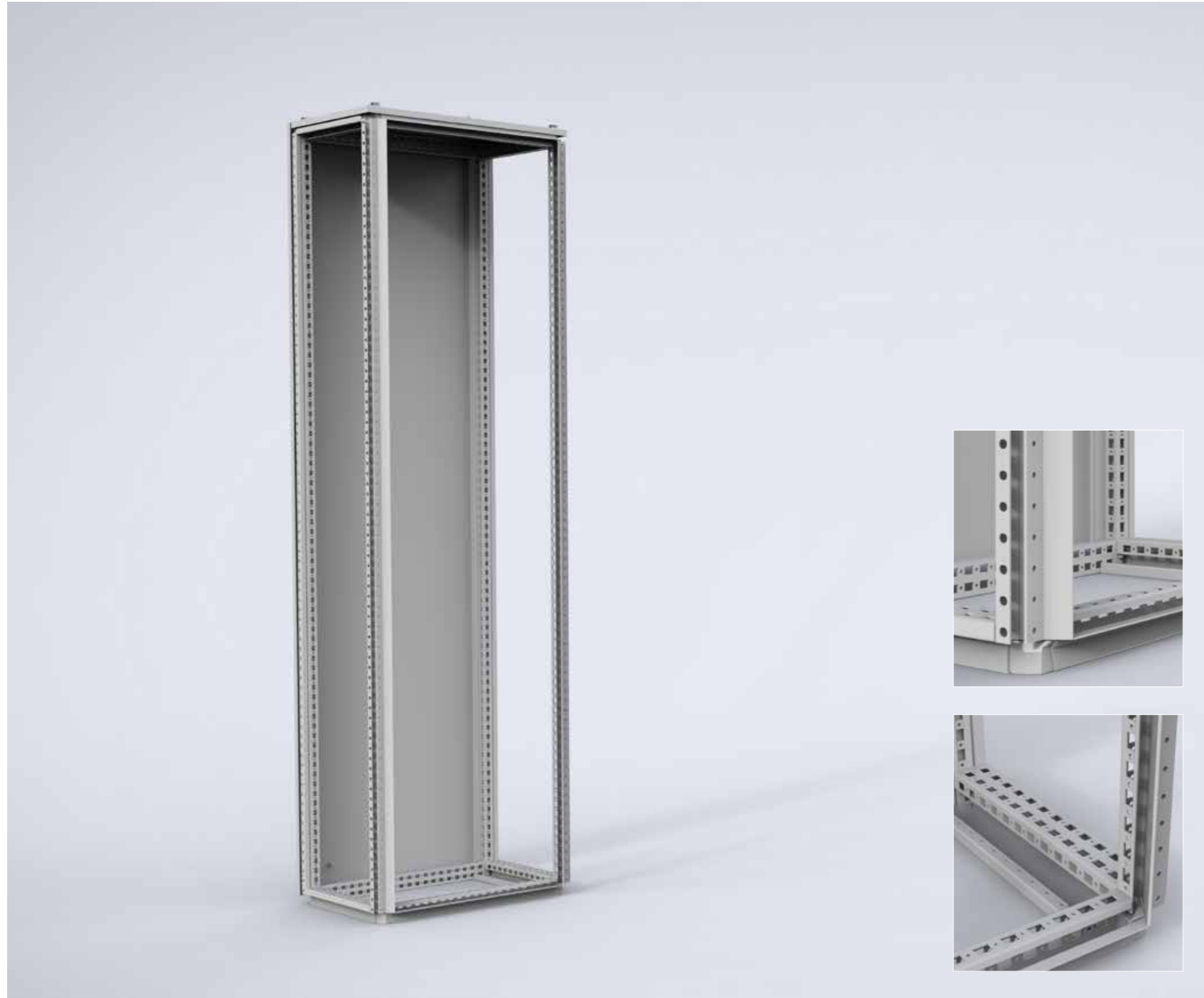
Enclosure				Doors		Thermal
	H	W	D	Plain doors *	Glazed doors *	Ventilated roofs
MKSL18064R5	1800	600	400	DN1806R5	DNG1806R5	CVR0604R5
MKSL18084R5	1800	800	400	DN1808R5	DNG1808R5	CVR0804R5
MKSL18104R5	1800	1000	400	-	-	CVR1004R5
MKSL18124R5	1800	1200	400	-	-	CVR1204R5
MKSL20064R5	2000	600	400	DN2006R5	DNG2006R5	CVR0604R5
MKSL20084R5	2000	800	400	DN2008R5	DNG2008R5	CVR0804R5
MKSL20104R5	2000	1000	400	-	-	CVR1004R5
MKSL20124R5	2000	1200	400	-	-	CVR1204R5

\* DNMK is required when a door will be installed

# Floor Standing Enclosures

Combinable enclosure | MCSL

IP 44, 55, 56 | TYPE 4, 12, 13 | IK 10



**Material:**

Frame: 1.5 painted steel. Rear and roof panels: 1.5 mm painted steel.

**Frame:**

Seam welded reversed open profiles with 25 mm hole pattern according to DIN 43660. Including integrated external hole pattern.

**Rear panel:**

Fitted by M6 torx screws. Standard facilities for rear door mounting.

**Roof panel:**

Removable.

**Earthing:**

All panels are earthed through their fittings and are equipped with a separate earthing stud.

**Finish:**

RAL 7035 structured powder coating.

**Protection:**

IP 44, 55, 56 | TYPE 4, 12, 13 | IK 10, depending of doors configuration.

**Mounting requirement:**

Standard delivery ready for combined installation. For stand-alone installation add side panels.

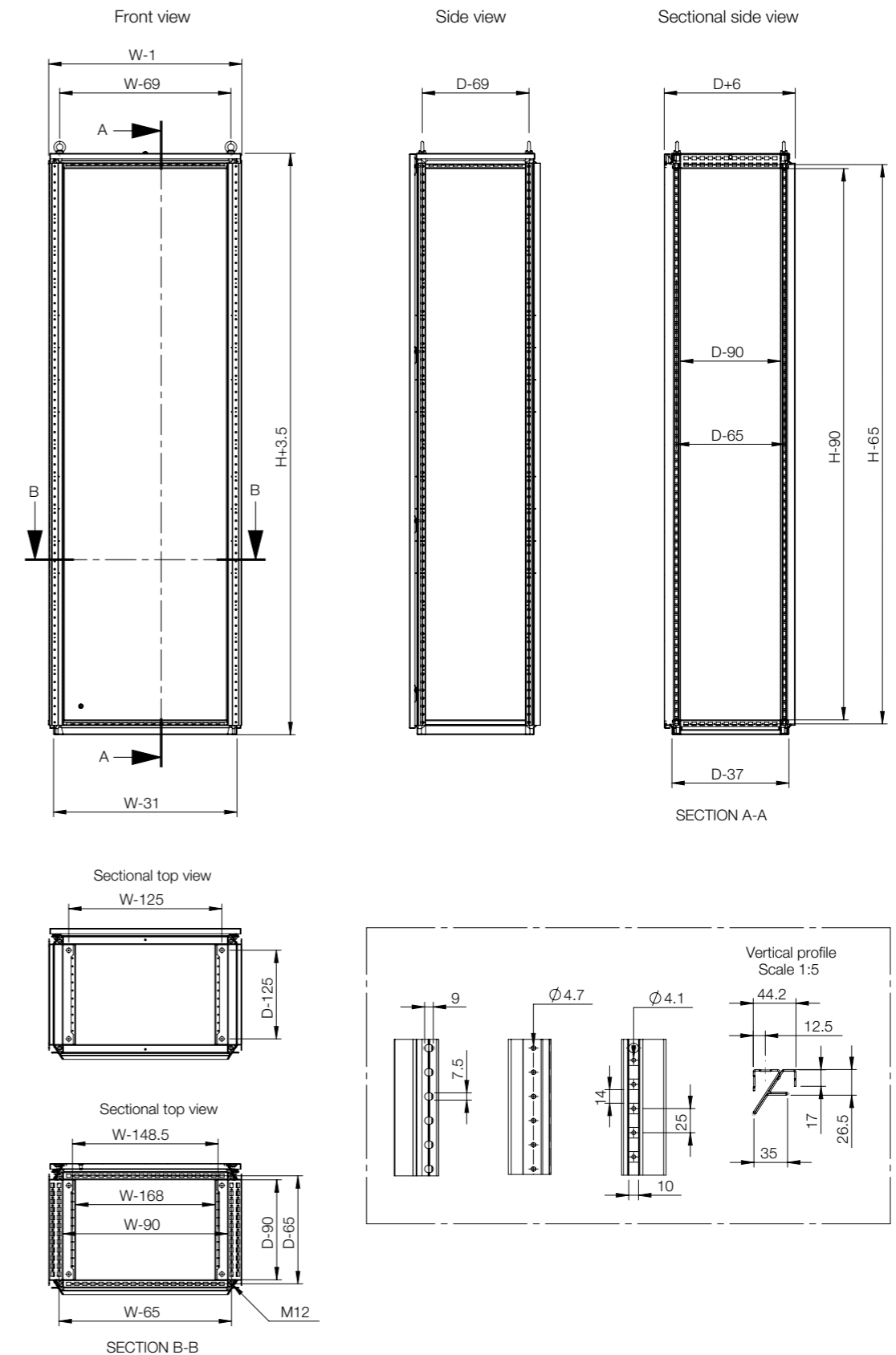
**Delivery:**

Frame, rear and roof panel. Delivery also includes earthing bolts. Delivered on a pallet with identical width of the enclosure to allow suiting without removal. All packing material is recyclable.

IP 44, 55, 56 | TYPE 4, 12, 13 | IK 10

Without mounting plate

Enclosure dimensions				Item no.
H	W	D		
1800	400	400		MCSL18044R5
1800	400	600		MCSL18046R5
1800	400	800		MCSL18048R5
1800	600	400		MCSL18064R5
1800	600	600		MCSL18066R5
1800	600	800		MCSL18068R5
1800	800	400		MCSL18084R5
1800	800	600		MCSL18086R5
1800	800	800		MCSL18088R5
1800	1000	400		MCSL18104R5
1800	1000	600		MCSL18106R5
1800	1000	800		MCSL18108R5
1800	1200	400		MCSL18124R5
1800	1200	600		MCSL18126R5
1800	1200	800		MCSL18128R5
2000	400	400		MCSL20044R5
2000	400	600		MCSL20046R5
2000	400	800		MCSL20048R5
2000	600	400		MCSL20064R5
2000	600	600		MCSL20066R5
2000	600	800		MCSL20068R5
2000	800	400		MCSL20084R5
2000	800	600		MCSL20086R5
2000	800	800		MCSL20088R5
2000	1000	400		MCSL20104R5
2000	1000	600		MCSL20106R5
2000	1000	800		MCSL20108R5
2000	1200	400		MCSL20124R5
2000	1200	600		MCSL20126R5
2000	1200	800		MCSL20128R5
2200	400	600		MCSL22046R5
2200	400	800		MCSL22048R5
2200	600	600		MCSL22066R5
2200	600	800		MCSL22068R5
2200	800	600		MCSL22086R5
2200	800	800		MCSL22088R5
2200	1000	600		MCSL22106R5
2200	1000	800		MCSL22108R5
2200	1200	600		MCSL22126R5
2200	1200	800		MCSL22128R5







## Accessories selection matrix I MCSL



Enclosure				Internal segregation			
	H	W	D	For incoming/outgoing sections	For incoming/outgoing sections with front opening	For cables section	Ventilated shelves
MCSL18044R5	1800	400	400	-	-	-	-
MCSL18046R5	1800	400	600	MSPS1806	MSPS1806F	MSPS1803	-
MCSL18048R5	1800	400	800	MSPS1808	MSPS1808F	MSPS1805	-
MCSL18064R5	1800	600	400	-	-	-	-
MCSL18066R5	1800	600	600	MSPS1806	MSPS1806F	MSPS1803	SHC0606
MCSL18068R5	1800	600	800	MSPS1808	MSPS1808F	MSPS1805	SHC0608
MCSL18084R5	1800	800	400	-	-	-	-
MCSL18086R5	1800	800	600	MSPS1806	MSPS1806F	MSPS1803	SHC0806
MCSL18088R5	1800	800	800	MSPS1808	MSPS1808F	MSPS1805	SHC0808
MCSL18104R5	1800	1000	400	-	-	-	-
MCSL18106R5	1800	1000	600	MSPS1806	MSPS1806F	MSPS1803	-
MCSL18108R5	1800	1000	800	MSPS1808	MSPS1808F	MSPS1805	-
MCSL18124R5	1800	1200	400	-	-	-	-
MCSL18126R5	1800	1200	600	MSPS1806	MSPS1806F	MSPS1803	-
MCSL18128R5	1800	1200	800	MSPS1808	MSPS1808F	MSPS1805	-
MCSL20044R5	2000	400	400	-	-	-	-
MCSL20046R5	2000	400	600	MSPS2006	MSPS2006F	MSPS2003	-
MCSL20048R5	2000	400	800	MSPS2008	MSPS2008F	MSPS2005	-
MCSL20064R5	2000	600	400	-	-	-	-
MCSL20066R5	2000	600	600	MSPS2006	MSPS2006F	MSPS2003	SHC0606
MCSL20068R5	2000	600	800	MSPS2008	MSPS2008F	MSPS2005	SHC0608
MCSL20084R5	2000	800	400	-	-	-	-
MCSL20086R5	2000	800	600	MSPS2006	MSPS2006F	MSPS2003	SHC0806
MCSL20088R5	2000	800	800	MSPS2008	MSPS2008F	MSPS2005	SHC0808
MCSL20104R5	2000	1000	400	-	-	-	-
MCSL20106R5	2000	1000	600	MSPS2006	MSPS2006F	MSPS2003	-
MCSL20108R5	2000	1000	800	MSPS2008	MSPS2008F	MSPS2005	-
MCSL20124R5	2000	1200	400	-	-	-	-
MCSL20126R5	2000	1200	600	MSPS2006	MSPS2006F	MSPS2003	-
MCSL20128R5	2000	1200	800	MSPS2008	MSPS2008F	MSPS2005	-
MCSL22046R5	2200	400	600	MSPS2206	MSPS2206F	MSPS2203	-
MCSL22048R5	2200	400	800	MSPS2208	MSPS2208F	MSPS2205	-
MCSL22066R5	2200	600	600	MSPS2206	MSPS2206F	MSPS2203	SHC0606
MCSL22068R5	2200	600	800	MSPS2208	MSPS2208F	MSPS2205	SHC0608
MCSL22086R5	2200	800	600	MSPS2206	MSPS2206F	MSPS2203	SHC0806
MCSL22088R5	2200	800	800	MSPS2208	MSPS2208F	MSPS2205	SHC0808
MCSL22106R5	2200	1000	600	MSPS2206	MSPS2206F	MSPS2203	-
MCSL22108R5	2200	1000	800	MSPS2208	MSPS2208F	MSPS2205	-
MCSL22126R5	2200	1200	600	MSPS2206	MSPS2206F	MSPS2203	-
MCSL22128R5	2200	1200	800	MSPS2208	MSPS2208F	MSPS2205	-

## Accessories selection matrix I MCSL



Enclosure				Doors		Thermal
	H	W	D	Plain doors *	Glazed doors *	Ventilated roofs
MCSL18044R5	1800	400	400	DN1804R5	-	-
MCSL18046R5	1800	400	600	DN1804R5	-	-
MCSL18048R5	1800	400	800	DN1804R5	-	-
MCSL18064R5	1800	600	400	DN1806R5	DNG1806R5	CVR0604R5
MCSL18066R5	1800	600	600	DN1806R5	DNG1806R5	CVR0606R5
MCSL18068R5	1800	600	800	DN1806R5	DNG1806R5	CVR0608R5
MCSL18084R5	1800	800	400	DN1808R5	DNG1808R5	CVR0804R5
MCSL18086R5	1800	800	600	DN1808R5	DNG1808R5	CVR0806R5
MCSL18088R5	1800	800	800	DN1808R5	DNG1808R5	CVR0808R5
MCSL18104R5	1800	1000	400	DN1810R5	-	CVR1004R5
MCSL18106R5	1800	1000	600	DN1810R5	-	CVR1006R5
MCSL18108R5	1800	1000	800	DN1810R5	-	CVR1008R5
MCSL18124R5	1800	1200	400	-	-	CVR1204R5
MCSL18126R5	1800	1200	600	-	-	CVR1206R5
MCSL18128R5	1800	1200	800	-	-	CVR1208R5
MCSL20044R5	2000	400	400	DN2004R5	-	-
MCSL20046R5	2000	400	600	DN2004R5	-	-
MCSL20048R5	2000	400	800	DN2004R5	-	-
MCSL20064R5	2000	600	400	DN2006R5	DNG2006R5	CVR0604R5
MCSL20066R5	2000	600	600	DN2006R5	DNG2006R5	CVR0606R5
MCSL20068R5	2000	600	800	DN2006R5	DNG2006R5	CVR0608R5
MCSL20084R5	2000	800	400	DN2008R5	DNG2008R5	CVR0804R5
MCSL20086R5	2000	800	600	DN2008R5	DNG2008R5	CVR0806R5
MCSL20088R5	2000	800	800	DN2008R5	DNG2008R5	CVR0808R5
MCSL20104R5	2000	1000	400	DN2010R5	-	CVR1004R5
MCSL20106R5	2000	1000	600	DN2010R5	-	CVR1006R5
MCSL20108R5	2000	1000	800	DN2010R5	-	CVR1008R5
MCSL20124R5	2000	1200	400	-	-	CVR1204R5
MCSL20126R5	2000	1200	600	-	-	CVR1206R5
MCSL20128R5	2000	1200	800	-	-	CVR1208R5
MCSL22046R5	2200	400	600	DN2204R5	-	-
MCSL22048R5	2200	400	800	DN2204R5	-	-
MCSL22066R5	2200	600	600	DN2206R5	DNG2206R5	CVR0606R5
MCSL22068R5	2200	600	800	DN2206R5	DNG2206R5	CVR0608R5
MCSL22086R5	2200	800	600	DN2208R5	DNG2208R5	CVR0806R5
MCSL22088R5	2200	800	800	DN2208R5	DNG2208R5	CVR0808R5
MCSL22106R5	2200	1000	600	DN2210R5	-	CVR1006R5
MCSL22108R5	2200	1000	800	DN2210R5	-	CVR1008R5
MCSL22126R5	2200	1200	600	-	-	CVR1206R5
MCSL22128R5	2200	1200	800	-	-	CVR1208R5

\* DNMK is required when a door will be installed



## Accessories for Floor Standing Enclosures

<b>General accessories .....</b>	<b>64</b>
Enclosure fixation .....	64
Cable management .....	66
Baying .....	70
Doors .....	77
Roofs .....	80
Lifting .....	81
Earthing .....	83
<b>Eldon Power System .....</b>	<b>84</b>
Incoming .....	84
Outgoing .....	92
Modular system .....	92
Fix system .....	100
Plug-in system .....	110
Cabling .....	112
Busbar .....	114
Control .....	122



## Accessories | General

### Front/rear plinths, PF

- Description:** Front and rear plinth sections. For cabling without any restrictions and in accordance with the VDE 0113 standard. The plinth consists of four corner pieces with removable front covers. The side panels PS are to be ordered separately. Produced in 100 mm and 200 mm heights. 200 mm high plinths are delivered with a rear cover for cabling that consists of two removable 100 mm high panels. The front cover is a one piece panel of 200 mm high. All panels have double returns on each panel for added strength.
- Material:** Corner pieces in 2 mm and panels in 1.5 mm mild steel.
- Finish:** RAL 7022 structured powder coating.
- Pack quantity:** 1 set of 4 corner pieces including covers. Front and rear panel (2 rear panels for 200 mm high plinths) with mounting accessories. Mounting accessories for side panels PS or transversal profiles PCP.

For enclosure		
H	W	Item no.
100	400	PF1040
100	600	PF1060
100	800	PF1080
100	1000	PF1100
100	1200	PF1120
200	400	PF2040
200	600	PF2060
200	800	PF2080
200	1000	PF2100
200	1200	PF2120

\* Available for MKSL and MCSL enclosures.



### Ventilated front/rear plinths, PV

- Description:** Front and rear plinth sections with ventilated panels. Recommended to be used in combination with the ventilated bottom plate CVB. For cabling without any restrictions and in accordance with the VDE 0113 standard. The plinth consists of four corner pieces with removable front covers. All panels have double returns for added strength. Only available in height of 100 mm.
- Material:** Corner pieces in 2 mm and panels in 1.5 mm mild steel.
- Finish:** RAL 7022 structured powder coating.
- Pack quantity:** 1 set of 4 corner pieces including covers. Front and rear panel with mounting accessories for side panels PS or transversal profiles PCP.
- Mounting requirement:** Add the side panels PS for a complete plinth. When combining enclosures it is recommended to add transversal panels PCP for cable duct support and extra rigidity. Use ventilated bottom plates CVB to get better enclosure ventilation.

For enclosure	
W	Item no.
400	PV1040
600	PV1060
800	PV1080
1000	PV1100
1200	PV1120

\* Available for MKSL and MCSL enclosures.



### Side plinths, PS

- Description:** Side panels to cover the openings in the sides of the PF plinth. Double folded panels for maximum strength. Compatible with combinable and semi-compact ranges.
- Material:** 1.5 mm steel plate.
- Finish:** RAL 7022 structured powder coating.
- Pack quantity:** 2 panels. Mounting accessories included with PF/PV.

For enclosure		
H	D	Item no.
100	400	PS1040
100	600	PS1060
100	800	PS1080
200	400	PS2040
200	600	PS2060
200	800	PS2080

\* Available for MKSL and MCSL enclosures.



## Floor Standing Enclosures

### Accessories | General

#### Plinth combining profiles, PCP

**Description:** Acts as a stabiliser when cabling is routed between bayed enclosures. With the PCP, plinths can be combined and fixed to the floor before the enclosures are mounted on them. The PCP can be used when cables have to go under the enclosure. For 200 mm high plinths, the PCP can be mounted in three different heights, top, middle or bottom. The hole pattern for cage nuts and M5x10 screws, allows accessories to be mounted.

**Material:** 2 mm steel plate.

**Finish:** RAL 7022 structured powder coating.

**Pack quantity:** 2 Profiles. Mounting accessories included with PCP.



For enclosure		
D		Item no.
400		PCP04
600		PCP06
800		PCP08

\* Available for MCSL enclosures.

#### Plain bottom plates, CBP

**Description:** Consist of three pieces for easy cable access. To achieve perfect sealing use the gasket kit BG01.

**Material:** 1mm zinc plated steel

**Pack quantity:** 1 kit of three parts bottom plate



For enclosure		
W	D	Item no.
400	400	CBP044
400	600	CBP046
400	800	CBP048
600	400	CBP064
600	600	CBP066
600	800	CBP068
800	400	CBP084
800	600	CBP086
800	800	CBP088
1000	400	CBP104
1000	600	CBP106
1000	800	CBP108
1200	400	CBP124
1200	600	CBP126
1200	800	CBP128

\* Available for MKSL and MCSL enclosures.

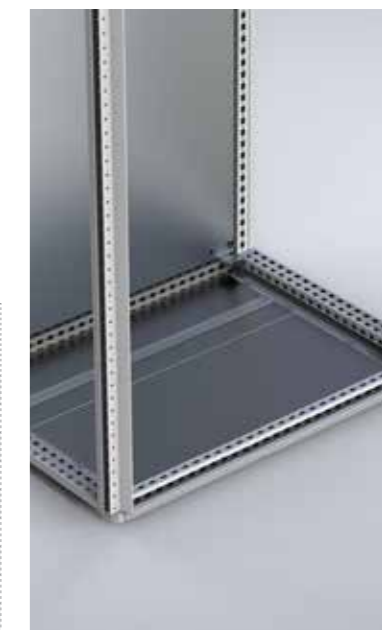
#### Ventilated bottom plates, CVB

**Description:** Three piece bottom plates. Can be used in combination with a ventilated plinth PV.

**Material:** 1.5 mm perforated zinc plated steel, 33% ventilated.

**Pack quantity:** 3 pieces with mounting material.

**Mounting requirement:** Use in combination with ventilated plinths PV.



For enclosure		
W	D	Item no.
600	400	CVB0604
600	600	CVB0606
600	800	CVB0608
800	400	CVB0804
800	600	CVB0806
800	800	CVB0808
1000	400	CVB1004
1000	600	CVB1006
1000	800	CVB1008

\* Available for MKSL and MCSL enclosures.

# Floor Standing Enclosures

## Accessories | General

### Front/rear bottom frames, PCU

- Description:** For fixing and routing of cables or mounting of busbar. Identical hole pattern to the enclosure's frame makes all relevant accessories (e.g. CLPF, CLPK, etc) possible to mount. Fixed to the base of the enclosure by M12 screws (provided).
- Material:** Frame in 1.75 mm steel plate, panels in 1.35 mm steel plate.
- Finish:** RAL 7035 structured powder coating.
- Protection:** IP 41 | TYPE 1.
- Mounting requirement:** Add side panels PCUP for closing the sides.
- Pack quantity:** 1 piece with front and back cover plates with mounting accessories.



For enclosure			
H	W	D	Item no.
200	400	600	PCU2046R5
200	400	800	PCU2048R5
200	600	600	PCU2066R5
200	600	800	PCU2068R5
200	800	600	PCU2086R5
200	800	800	PCU2088R5
200	1000	600	PCU2106R5
200	1000	800	PCU2108R5
200	1200	600	PCU2126R5
200	1200	800	PCU2128R5
300	400	600	PCU3046R5
300	400	800	PCU3048R5
300	600	600	PCU3066R5
300	600	800	PCU3068R5
300	800	600	PCU3086R5
300	800	800	PCU3088R5
300	1000	600	PCU3106R5
300	1000	800	PCU3108R5
300	1200	600	PCU3126R5
300	1200	800	PCU3128R5

\* Available for MCSL enclosures.

### Side bottom frames, PCUP

- Description:** For covering the sides of the bottom cabling frame PCU. Fixed with 4 screws.
- Material:** 1.35 mm steel plate.
- Finish:** RAL 7035 structured powder coating.
- Pack quantity:** 2 panels with mounting accessories.



For enclosure		
H	D	Item no.
200	600	PCUP206R5
200	800	PCUP208R5
300	600	PCUP306R5
300	800	PCUP308R5

\* Available for MCSL enclosures.

### Front/rear top frames, MCU

- Description:** For cable entry and routing or for installation of a power distribution system. Fixed to the top of the enclosure by four M12 screws. Available in both 200 mm and 300 mm height. The enclosure roof plate CCR can be used to close the top. For lifting a 200 mm high MCU together with an enclosure a separate lifting kit MCUK is needed.
- Side panels:** MCUP Supplied as an accessory.
- Material:** Frame in 1.75 mm steel plate, panels in 1.35 mm steel plate.
- Finish:** RAL 7035 structured powder coating.
- Protection:** IP 41.
- Pack quantity:** 1 piece with front and back panels including mounting accessories (without roof plate).



For enclosure			
H	W	D	Item no.
200	400	600	MCU2046R5
200	400	800	MCU2048R5
200	600	600	MCU2066R5
200	600	800	MCU2068R5
200	800	600	MCU2086R5
200	800	800	MCU2088R5
200	1000	600	MCU2106R5
200	1000	800	MCU2108R5
200	1200	600	MCU2126R5
200	1200	800	MCU2128R5
300	400	600	MCU3046R5
300	400	800	MCU3048R5
300	600	600	MCU3066R5
300	600	800	MCU3068R5
300	800	600	MCU3086R5
300	800	800	MCU3088R5
300	1000	500	MCU3106R5
300	1000	800	MCU3108R5
300	1200	600	MCU3126R5
300	1200	800	MCU3128R5

\* Available for MCSL enclosures.

## Floor Standing Enclosures

### Accessories | General

#### Side top frames, MCUP

**Description:** For covering the sides of the top cabling frame. Fixed with 4 screws.

**Material:** 1.35 mm steel plate.

**Finish:** RAL 7035 structured powder coating.

**Pack quantity:** 2 panels with mounting accessories.

For enclosure		Item no.
H	D	
200	600	MCUP206R5
200	800	MCUP208R5
300	600	MCUP306R5
300	800	MCUP308R5

\* Available for MCSL enclosures.



#### Internal baying brackets, CCI

**Description:** Brackets provide a rigid reinforcement of the enclosure assembly. The correct spacing between the enclosures is assured.

**Material:** 3 mm zinc plated steel.

**Pack quantity:** 6 brackets with mounting accessories.

Item no.
CCI06

\* Available for MCSL enclosures.



#### Lifting kit, MCUK

**Description:** For lifting the enclosure together with the top cable frame MCU of 200 mm high. Mounted directly into the enclosure's frame and therefore releasing the MCU from any strain. 300 mm high MCUs must be lifted separately.

**Pack quantity:** 4 spindles with lifting eyes according to DIN 580 lifting instructions.

Item no.
MCUK04

\* Available for MCSL enclosures.



#### Internal corner baying kit, CCM

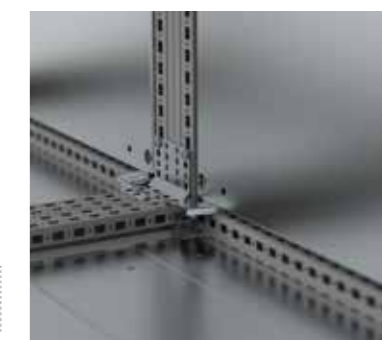
**Description:** For extra support when bayed enclosures are fully equipped and require lifting. Can be used together with SPD separation plates.

**Material:** 3 mm zinc plated steel.

**Pack quantity:** 4 brackets with mounting accessories.

Item no.
CCM04

\* Available for MCSL enclosures.



#### Side panels, SPM

**Description:** Easy one man assembly. Sealed by an extruded, one piece polyurethane gasket and mounted with 8 screws. Can be replaced by the side door DNS.

**Material:** 1.5 mm steel plate.

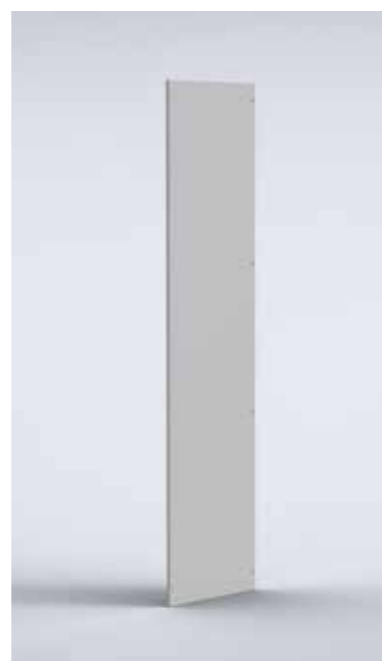
**Finish:** RAL 7035 structured powder coating.

**Protection:** IP 56 | TYPE 4, 12, 13.

**Pack quantity:** 2 panels with mounting accessories.

For enclosure		Item no.
H	D	
1800	400	SPM1804R5
1800	600	SPM1806R5
1800	800	SPM1808R5
2000	400	SPM2004R5
2000	600	SPM2006R5
2000	800	SPM2008R5
2200	600	SPM2206R5
2200	800	SPM2208R5

\* Available for MCSL enclosures.



#### External baying brackets, CCE

**Description:** Brackets mounted on the outside hole pattern of the frame ensuring a strong and 3 dimensional alignment of the bayed enclosures with "auto spacer" function. This method of baying enclosures also has the advantage of realizing a direct earthing connection between the enclosure frames.

**Material:** 3 mm zinc plated steel.

**Pack quantity:** 6 brackets with mounting accessories.

Item no.
CCE06

\* Available for MCSL enclosures.

\*\*If partial doors, DP, with a height of 150mm or 200mm are installed, only the CCEH bracket can be used.



## Floor Standing Enclosures

### Accessories | General

#### Short external baying brackets, CCEH

**Description:** Short brackets mounted on the outside hole pattern of the frame of the bayed enclosures with "auto spacer" function. Specially designed for small doors/panels configuration. This method of baying enclosures has also the advantage of realising a direct earthing connection between the enclosure frames.

**Material:** 3 mm zinc plated steel.

**Pack quantity:** 6 brackets with mounthing material.

Item no.
CCEH06

\* Available for MCSL enclosures.



#### Vertical dividers, CDV

**Description:** The profile is identical to the enclosure's frame and provides vertical separation of the enclosure when partial doors or panels are fitted. Can be mounted in 200 mm steps.

**Material:** Front profile: 2 mm mild steel. Inner profile: 1.75 mm zinc plated steel.

**Finish:** RAL 7035 structure powder coating.

**Pack quantity:** 1 set of profiles with mounting accessories.

For enclosure		Item no.
H		
1800		CDV1800R5
2000		CDV2000R5
2200		CDV2200R5

\* Available for MKSL and MCSL enclosures



#### Horizontal dividers, CDH

**Description:** Used when the enclosure requires horizontal separation for partial doors or panels. Mounted on the outside hole pattern of the combinable mild steel floor standing range.

**Material:** 2 mm zinc plated steel.

**Mounting requirement:** CDH Pieces = number of doors/panels + 1.

**Pack quantity:** 2 profiles with mounting accessories.

W	Item no.
400	CDH400
600	CDH600
800	CDH800

\* Available for MCSL enclosures



#### Horizontal dividers, CDHK

**Description:** Used when the enclosure requires horizontal divisions. Can be mounted on the hole pattern of semi-compact mild steel floor standing range.

**Material:** 2 mm zinc plated steel.

**Pack quantity:** 2 profiles with mounting accessories.

W	Item no.
400	CDHK400
600	CDHK600
800	CDHK800

\* Available for MKSL enclosures



#### Vertical dividing bars, VB

**Description:** Fitted in the centre of 1200 mm or 1600 mm wide enclosures (front and rear) to provide standard mounting facilities in two vertical sections of 600 mm or 800 mm. This enables separate fitting of equipment such as swing frames, system profiles, in either section of the enclosure.

**Material:** 2 mm zinc plated steel.

**Pack quantity:** 1 pair without mounting accessories.

**Mounting requirement:** Add VBK for mounting. For complete mounting facilities in the division add VBD.

For enclosure		Item no.
H		
1800		VB1800
2000		VB2000
2200		VB2200

\* Available for MCSL and MKSL enclosures



#### Depth dividing bars, VBD

**Description:** Fitted in the centre of a 1200 mm or 1600 mm wide enclosure (top and bottom), to provide standard mounting facilities in two sections of 600 mm or 800 mm wide. This enables separate fitting of accessories such as CAB(P), CBU, CLPK, CLPF etc., in either side of the enclosure. Accessories are adjustable in depth within the 25 mm hole pattern.

**Material:** 2 mm zinc plated steel.

**Pack quantity:** 1 pair without mounting accessories.

**Mounting requirement:** Add VBK for mounting. Add VB for complete mounting facilities in the division.

For enclosure		Item no.
D		
400		VBD400
600		VBD600
800		VBD800

\* Available for MCSL and MKSL enclosures



# Floor Standing Enclosures

## Accessories | General

### Fixing brackets, VBK

**Description:** Mounting brackets for the VB or VBD in 1200 mm or 1600 mm wide enclosure. It does not interfere with bottom plates.

**Material:** 3 mm zinc plated steel.

**Pack quantity:** 4 pieces with mounting accessories.

	Item no.
If depth dividing bar, VBD is installed	VBK04
If depth dividing bar, VBD and vertical dividing bar, VD are installed	VBK1200
If vertical dividing bar, VB is installed	VBK1600

\* Available for MCSL and MKSL enclosures



### Top and bottom panels, DPC

**Description:** Required to cover the remaining space at the top and bottom. Used in combination with horizontal dividers CDH, the partial doors/panels DP/ DPP and cable space door DPA.

**Material:** 1.75 mm steel plate.

**Finish:** RAL 7035 structured powder coating.

**Protection:** IP 44. For IP 21 delivered without gasket.

**Mounting requirement:** DPC covers 200 mm in height of the enclosure. So for a 2000 mm high enclosure when DPC is used, there is 1800 mm space left for partial doors/panels.

**Pack quantity:** Top and bottom panels with mounting accessories.

H	W	Item no.
100+70	400	DPC0714R5
100+70	600	DPC0716R5
100+70	800	DPC0718R5

\* Available for MCSL and MKSL enclosures



### Ventilated top and bottom panels, DPCV

**Description:** Required to cover the remaining space at the top and bottom. With ventilation slots for added heat dissipation in switchgear enclosures. Used in combination with horizontal dividers CDH, the partial doors/panels DP/DPP and cable space door DPA.

**Material:** 1.75 mm steel plate.

**Finish:** RAL 7035 structured powder coating.

**Protection:** IP 20.

**Mounting requirement:** DPCV covers 200 mm in height of the enclosure. So for a 2000 mm high enclosure when DPCV is used, there is 1800 mm space left for partial doors/panels.

**Pack quantity:** 2 panels with mounting accessories.

H	W	Item no.
100+70	400	DPCV0714R5
100+70	600	DPCV0716R5
100+70	800	DPCV0718R5

\* Available for MKSL and MCSL enclosures.



### Partial doors, DP

**Description:** To divide the enclosure front into sections when used in conjunction with the horizontal divider CDH/CHDK. Equipped with double-bit 3 mm lock (1 lock up to 400 mm, over 400 mm height 2 locks).

**Material:** 1.75 mm steel plate.

**Finish:** RAL 7035 structured powder coating.

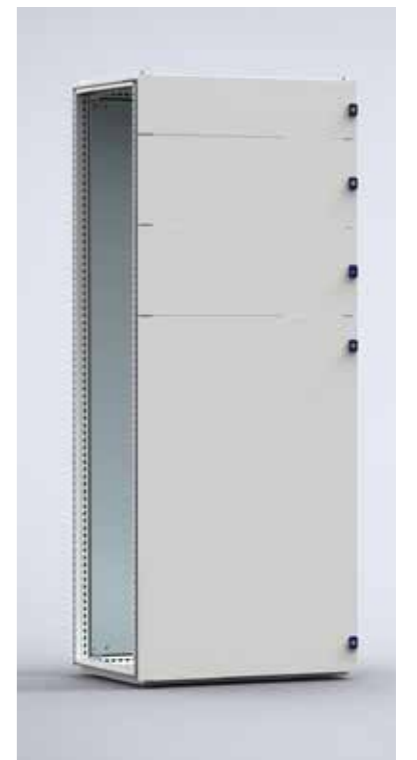
**Protection:** IP 44.

**Pack quantity:** 1 door with hinges, locks and mounting accessories.

**Mounting requirement:** Add CDH for MC frames and use CDHK for MK frames.

H	W	Item no.
150	600	DP01506R5
150	800	DP01508R5
200	600	DP02006R5
200	800	DP02008R5
250	600	DP02506R5
250	800	DP02508R5
300	600	DP03006R5
300	800	DP03008R5
400	600	DP04006R5
400	800	DP04008R5
500	600	DP05006R5
500	800	DP05008R5
600	600	DP06006R5
600	800	DP06008R5
800	600	DP08006R5
800	800	DP08008R5
1000	600	DP10006R5
1000	800	DP10008R5

\* Available for MKSL and MCSL enclosures.



# Floor Standing Enclosures

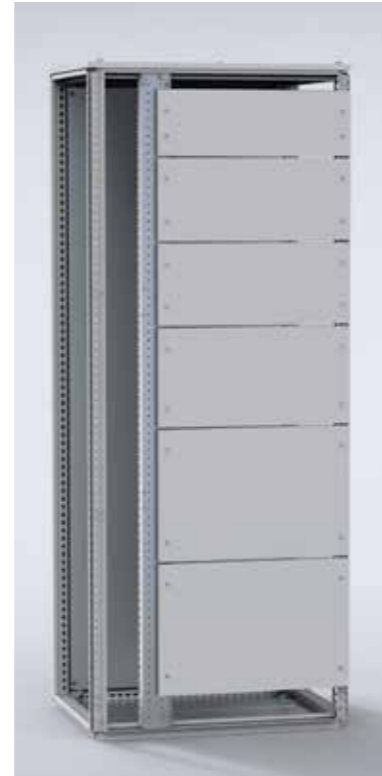
## Accessories | General

### Partial panels, DPP

- Description:** To divide the enclosure front into sections when used in conjunction with the horizontal divider CDH/CDHK when no door is required.
- Material:** 1.75 mm steel plate.
- Finish:** RAL 7035 structured powder coating.
- Protection:** IP 44.
- Pack quantity:** 1 panel with mounting accessories.
- Mounting requirement:** Add CDH for MC frames and use CDHK for MK frames. Use DPC for top and bottom panels.

H	W	Item no.
100	600	DPP01006R5
100	800	DPP01008R5
150	600	DPP01506R5
150	800	DPP01508R5
200	600	DPP02006R5
200	800	DPP02008R5
250	600	DPP02506R5
250	800	DPP02508R5
300	600	DPP03006R5
300	800	DPP03008R5
400	600	DPP04006R5
400	800	DPP04008R5

\* Available for MKSL and MCSL enclosures.



### Vertical front panels, DPB

- Description:** In order to cover vertical busbar space. Used in combination with CDV.
- Material:** 2 mm steel plate.
- Finish:** RAL 7035 structured powder coating.
- Protection:** IP 44.
- Pack quantity:** 1 panel with mounting accessories.

H	W	Item no.
1800	200	DPB18002R5
2000	200	DPB20002R5
2200	200	DPB22002R5

\* Available for MKSL and MCSL enclosures.



### Cable space doors, DPA

- Description:** To close a vertical cable section. Used in combination with CDV. In order to close the front, top and bottom panels DPC/DPCV are required.
- Material:** 1.75 mm steel plate.
- Finish:** RAL 7035 structured powder coating.
- Protection:** IP 44.
- Mounting requirement:** Add CDH for MC frames and use CDHK for MK frames.
- Pack quantity:** 1 door with hinges and 3 double-bit 3 mm, locks.

H	W	Item No.
1600	400	DPA1604R5
1600	600	DPA1606R5
1800	400	DPA1804R5
1800	600	DPA1806R5
2000	400	DPA2004R5
2000	600	DPA2006R5

\* Available for MKSL and MCSL enclosures.



### Plain doors, DN

- Description:** Standard door equipped with double-bit 3 mm lock system and door frame. Door accessory kit DNMK (hinges, rod catches) to be ordered separately. Allows all the options of the locking program and 180° hinges. Compatible with combinable and semi-compact ranges.
- Material:** 2 mm steel plate.
- Maximum load:** 800 N.
- Finish:** RAL 7035 structured powder coating.
- Mounting requirement:** Use hinge kit DNMK01 if no door was fitted previously.
- Pack quantity:** 1 piece.

Single door

H	W	Item no.
1800	400	DN1804R5
1800	600	DN1806R5
1800	800	DN1808R5
1800	1000	DN1810R5
2000	500	DN2004R5
2000	600	DN2006R5
2000	800	DN2008R5
2000	1000	DN2010R5
2200	400	DN2204R5
2200	600	DN2206R5
2200	800	DN2208R5
2200	1000	DN2210R5

\* Available for MKSL and MCSL enclosures.



# Floor Standing Enclosures

## Accessories | General

### Glazed doors, DNG

- Description:** Standard door with fitted clear safety glass to view the inside of the enclosure. Equipped with double-bit 3 mm lock system and door frame. Allows all options of the locking program.
- Material:** Frame: 2 mm steel plate. Viewing area: 4 mm clear safety glass.
- Finish:** RAL 7035 structured powder coating.
- Protection:** IP 55 | TYPE 12 | IK 10.
- Pack quantity:** 1 piece.
- Mounting requirement:** Use hinge kit DNMK01 if no door was fitted previously.



For enclosure		
H	W	Item no.
1800	600	DNG1806R5
1800	800	DNG1808R5
2000	600	DNG2006R5
2000	800	DNG2008R5
2200	600	DNG2206R5
2200	800	DNG2208R5

\* Available for MKSL and MCSL enclosures.

### Inner doors, DI

- Description:** Inner door provides a hinged mounting surface for equipment behind a standard or glazed front door. A mounting space of 80 mm, is available between the doors when the inner door is in forward position. Can be adjusted in depth by steps of 25 mm. The mounting plate remains usable behind the inner door. The door is equipped with two double-bit 3 mm locks, and plastic handles.
- Material:** 1.5 mm mild steel.
- Finish:** RAL 7035 structured powder coating.
- Pack quantity:** 1 door with mounting accessories.



For enclosure		
H	W	Item no.
1800	600	DI1806R5
1800	800	DI1808R5
2000	600	DI2006R5
2000	800	DI2008R5
2200	600	DI2206R5
2200	800	DI2208R5

\*Other sizes available on request.

\*\*Available for MCSL and MKSL enclosures

### Door mounting kits, DNMK

- Description:** Door mounting kit for mild steel floor standing enclosures. Required when fitting a door. Only needed when there was no door mounted previously.
- Pack quantity:** 1 complete kit with hinges, rod catches and mounting accessories.



Description	Item no.
for single door enclosures	DNMK01
for double door enclosures	DNMK02

\* Available for MKSL and MCSL enclosures.

### Door stop, DSTP

- Description:** To lock an open door in position. Mounted directly to the door frame and on the enclosure profile.
- Material:** Zinc plated steel.
- Pack quantity:** 1 piece with mounting accessories.



Item no.
DSTP02

\* Available for MKSL and MCSL enclosures.

### Document pocket, DRA

- Description:** Self adhesive, for DIN A4.
- Usable depth:** 30 mm.
- Material:** Thermoplastic.
- Finish:** RAL 7035.
- Pack quantity:** 1 document pocket with double sided tape.



Item no.
DRA04

\* Available for MKSL and MCSL enclosures.



# Floor Standing Enclosures

## Accessories | General

### Document pockets, DRB

**Description:** A large steel document pocket fixed directly onto the door frame. Usable depth: 68 mm.

**Material:** 1.35 mm mild steel.

**Finish:** RAL 7035 structured powder coating.

**Pack quantity:** 1 piece with mounting accessories.



Description	Item no.
Universal document pocket 300 mm wide for 600 mm doors	DRB0303R5
for 800 mm doors	DRB600R5
	DRB800R5

\* Available for MKSL and MCSL enclosures.

### Ventilation roofs, CVR

**Description:** Raised roof with 2.5 mm ventilation slots and filter material.

**Material:** 1.5 mm steel plate. Filter material: EU 4 according to DIN 24185.

**Finish:** RAL 7035 structured powder coating.

**Temperature resistance:** 100° C.

**Protection:** IP 31 | TYPE 1.

**Pack quantity:** 1 piece with mounting brackets and ventilation filter.

**Note:** Increases the enclosure height by 40 mm.



For enclosure		
W	D	Item no.
600	400	CVR0604R5
600	600	CVR0606R5
600	800	CVR0608R5
800	400	CVR0804R5
800	600	CVR0806R5
800	800	CVR0808R5
1000	400	CVR1004R5
1000	600	CVR1006R5
1000	800	CVR1008R5
1200	400	CVR1204R5
1200	600	CVR1206R5
1200	800	CVR1208R5

### Spacer kits, CVK

**Description:** Provides ventilation by raising the roof panel 15 mm (CVK15), 50 mm (CVK50).

**Material:** Zinc plated steel.

**Pack quantity:** 4 pieces with mounting accessories.



Item no.
CVK15
CVK50

\* Available for MKSL and MCSL enclosures.

### Lifting eye bolts, LE

**Description:** M12 thread. Mounts directly to the frame corner pieces of the enclosure. Complies with DIN 580 lifting requirements.

**Maximum load:** 3400 N per lifting eye with max angle of 45°. Please follow Eldon lifting instructions.

**Pack quantity:** 4 pieces.



Material	Item no.
Zinc plated steel	LE9304

\* Available for MKSL and MCSL enclosures.

### Lifting device, LC

**Description:** For optimal weight distribution when lifting bayed enclosures. To be used in combination with baying bracket.

**Material:** 5 mm zinc plated steel.

**Pack quantity:** 2 pieces with mounting accessories.



Item no.
LC02

\* Available for MCSL enclosures.

# Floor Standing Enclosures

## Accessories | General

### Side mounting bars, CMB

**Description:** For fixing cables, cable guides, etc, in the depth or the width of an enclosure.

**Material:** 2 mm zinc plated steel.

**Pack quantity:** 20 profiles with mounting accessories.



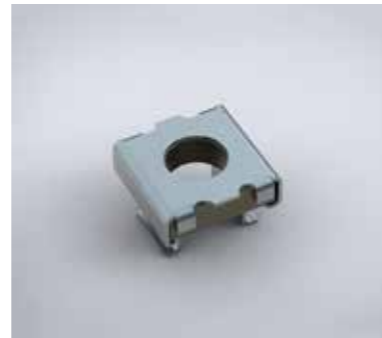
For enclosure		Item no.
W/D		
400		CMB402
600		CMB602
800		CMB802

\* Available for MKSL and MCSL enclosures.

### Cage nuts, CNM

**Description:** Cage nuts designed for universal use on the enclosure frame profiles and the profiles system.

**Pack quantity:** 50 pieces.



Thread	Item no.
M6	CNM615
M8	CNM815

\* Available for MKSL and MCSL enclosures.

### Screws for clip-on cage nuts, CNS

**Description:** Socket head screws M6x12 and M8x12 for clip-on cage nuts.

**Pack quantity:** 250 pieces.



Thread	Item no.
M6	CNS612
M8	CNS812

\* Available for MKSL and MCSL enclosures.

### Earthing cables, ECFA

**Description:** For earthing between metallic parts.

**Material:** 6 mm<sup>2</sup> copper wire (yellow-green).

**Pack quantity:** 10 pieces.

**Mounting requirement:** Add connection set ECF for fixing cable to painted frame.



Length	Connection size	Item no.
220 mm	M6/M8	ECFA220
300 mm	M8/M8	ECFA300

\* Available for MKSL and MCSL enclosures.

### Earthing connections for frames, ECF

**Description:** Earthing connections for fixing the earthing straps and cables to the enclosure's frame.

**Pack quantity:** 10 sets.



Size	Item no.
M6	ECF06
M8	ECF08

\* Available for MKSL and MCSL enclosures.

### Earthing connections for panels, ECP

**Description:** Earthing connection for fixing the earthing straps and cables to panels, mounting plates or profiles.

**Pack quantity:** 10 sets.



Size	Item no.
M6	ECP06
M8	ECP08

\* Available for MKSL and MCSL enclosures.

# Floor Standing Enclosures

## Accessories | Incoming

### Internal side panels, MSPS

**Description:** Internal side panels to build up sections as from the enclosure frame. Frame hole pattern is needed in front, rear, top and bottom.

**Material:** 1.5 mm galvanized steel.

**Delivery:** 1 piece with mounting material.

For cables section

H	D	Side panel dimensions		Item no.
		h	w	
1800	300	1707	337	MSPS1803
1800	500	1707	537	MSPS1805
2000	300	1907	337	MSPS2003
2000	500	1907	537	MSPS2005
2200	300	2107	337	MSPS2203
2200	500	2107	537	MSPS2205

For incoming/outgoing sections

H	D	Side panel dimensions		Item no.
		h	w	
1800	600	1707	507	MSPS1806
1800	800	1707	707	MSPS1808
2000	600	1907	507	MSPS2006
2000	800	1907	707	MSPS2008
2200	600	2107	507	MSPS2206
2200	800	2107	707	MSPS2208

For incoming/outgoing sections with front opening

H	D	Side panel dimensions		Item no.
		h	w	
1800	600	1707	507	MSPS1806F
1800	800	1707	707	MSPS1808F
2000	600	1907	507	MSPS2006F
2000	800	1907	707	MSPS2008F
2200	600	2107	507	MSPS2206F
2200	800	2107	707	MSPS2208F



### Shelves for air circuit-breakers (ACB), MSCC

**Description:** Shelf to mount air circuit-breakers. The shelf has ventilation slots to allow air circulation in the section. It can be mounted only if we have internal side panels MSPSxx06 in both sides. Adjustable height position in steps of 25 mm.

**Material:** 2 mm galvanized steel.

**Delivery:** 1 piece with mounting material

For enclosure		Shelf dimensions		Item no.
W	D	w	d	
600	600	504	283	MSCC0606
800	600	704	283	MSCC0806
1000	600	904	283	MSCC1006



### Ventilated shelves, SHC

**Description:** Mounted directly onto the enclosure's frame. The load capacity is 500 N.

**Material:** 2 mm zinc plated steel.

**Pack quantity:** 1 shelf with mounting accessories.

For enclosure		Shelf dimensions		Item no.
W	D	w	d	
600	600	509	555	SHC0606
600	800	509	755	SHC0608
800	600	709	555	SHC0806
800	800	709	755	SHC0808



## Floor Standing Enclosures

### Accessories | Incoming

#### Partial height mounting plates, MPP

**Description:** Mounted directly on the enclosure's frame or onto click-in profiles (CLPK). Special design of the bracket allows for one man mounting. Can be mounted in any height or depth position within the 25 mm hole pattern. Appropriate sizes can also be used on the sides of the enclosure.

**Material:** 3 mm galvanized steel.

**Pack quantity:** 1 plate with mounting accessories.

**Mounting requirement:** Add CLPK for depth adjustment.

**Note:** MPP can be mounted in both directions.

For enclosure		Mounting plate dimensions			Item no.
H/W	W/H	h/w	w/h		
600	400	494	294	MPP0604	
600	600	494	494	MPP0606	
600	800	494	694	MPP0608	
600	1000	494	894	MPP0610	
800	400	694	294	MPP0804	
800	800	694	694	MPP0808	
1000	400	894	294	MPP1004	
1000	800	894	694	MPP1008	
1200	400	1094	294	MPP1204	
1200	600	1094	494	MPP1206	



#### Click-in profiles, CLPK

**Description:** Universal profile for both depth and width fitting on the 25 mm DIN hole pattern of the enclosure's frame or in combination with the CLPF and VB profiles. The 75 mm wide profile is equipped with three rows of holes of which one is turned 90°. This makes it possible to mount the CLPF profiles in both orientations. The CLPK can be secured by the use of self tapping screws.

**Material:** 1.5 mm zinc plated steel.

**Pack quantity:** 4 profiles.

For enclosure		Max. loading	Item no.
W/D			
400		1600 N	CLPK400
600		1600 N	CLPK600
800		1200 N	CLPK800
1000		1200 N	CLPK1000



#### Mounting profiles, CLPF

**Description:** The CLPF profile system is a 40 mm wide and 25 mm high profile, which can be mounted in all directions on the enclosure's frame. It can also be used in combination with the CLPK and the VB profiles. By turning the profile it can be used as a standard CP20/40 profile in combination with GLM 40/6 sliding nuts, to mount installation material which needs adjusting in depth. The profiles, when mounted onto the enclosure's frame are flush with the enclosure's profiles. Two rows of hole patterns for cage nut fixing and self tapping screws are provided. For 90 mm wide profiles two profiles can be mounted next to each other.

**Material:** Zinc plated steel.

**Pack quantity:** 4 profiles including fixing accessories.

For enclosure		Max. loading Horizontal C	Max. loading Horizontal []	Item no.
H/W	W/D			
400	400	800 N	1000 N	CLPF400
600	600	800 N	1000 N	CLPF600
800	800	800 N	1000 N	CLPF800
1000	1000	800 N	1000 N	CLPF1000



#### Fix system vertical profiles, MSFP

**Description:** Vertical profiles to build up fix systems. It can be mounted with or without sidepanels MSFS. These profiles lets us to mount MCCBs in mounting plates MSMPN, or DIN rails for modular components with the accessory fix MSADP or adjustable MSMPA01. The busbar supports in the rear of the compartments, MSFH, mount directly to the profile.

**Material:** 1.55 mm galvanized steel.

**Delivery:** 2 pieces with mounting material.

For enclosure		Item no.
H		
1800		MSFP1800
2000		MSFP2000
2200		MSFP2200



## Accessories | Incoming

### Mounting plates, MSMPN

**Description:** Mounting plate for installation of breakers. Suitable for left and right hand connections.

**Material:** 1.5 mm galvanized steel.

**Pack quantity:** 1 piece with mounting material.

**Requirements:** To be assembled on MSFP, or on MSMSM/MSMSF with MSMPA01.

#### Plain

Mounting plate dimensions				
H	W	h	w	Item no.
50	600	46	470	MSMPN0506
50	800	46	670	MSMPN0508
100	600	96	470	MSMPN1006
100	800	96	670	MSMPN1008
150	600	146	470	MSMPN1506
150	800	146	670	MSMPN1508
200	600	196	470	MSMPN2006
200	800	196	670	MSMPN2008
250	600	246	470	MSMPN2506
250	800	246	670	MSMPN2508
300	600	296	470	MSMPN3006
300	800	296	670	MSMPN3008
400	600	396	470	MSMPN4006
400	800	396	670	MSMPN4008
450	600	446	470	MSMPN4506
450	600	446	670	MSMPN4508
500	600	496	470	MSMPN5006
500	800	496	670	MSMPN5008
600	600	596	470	MSMPN6006
600	800	596	670	MSMPN6008
600	1000	596	870	MSMPN6010

#### Horizontal opening

Mounting plate dimensions				
H	W	h	w	Item no.
100	600	96	470	MSMPN1006H
100	800	96	670	MSMPN1008H

#### Vertical opening

Mounting plate dimensions				
H	W	h	w	Item no.
150	600	146	470	MSMPN1506V
150	800	146	670	MSMPN1508V
200	600	196	470	MSMPN2006V
200	800	196	670	MSMPN2008V
250	600	246	470	MSMPN2506V
250	800	246	670	MSMPN2508V
300	600	296	470	MSMPN3006V
300	800	296	670	MSMPN3008V
400	600	396	470	MSMPN4006V
400	800	396	670	MSMPN4008V
450	600	446	470	MSMPN4506V
450	800	446	670	MSMPN4508V
500	600	496	470	MSMPN5006V
500	800	496	670	MSMPN5008V
600	600	596	470	MSMPN6006V
600	800	596	670	MSMPN6008V



### Adjustable brackets, MSMPA01

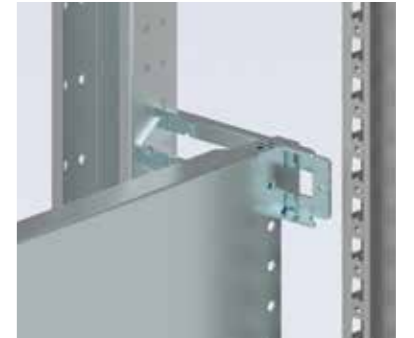
**Description:** A bracket to mount a DIN-rail or mounting plate which is adjustable in depth to allow for mounting of components in different sizes in the desired position. Panel builders can hold less stock and engineer with fewer item numbers thanks to the adjustable depth design.

**Material:** 2.5 mm galvanized steel, zamak.

**Pack quantity:** 2 pairs.

**Requirements:** To be assembled on MSFP, or on MSMSM/MSMSF.

Item no.
MSMPA01



### Front cover profiles, MSFCP

**Description:** Front frame built up by two vertical and two horizontal profiles. To be covered by front panels MSMBP or MSMCP.

**Material:** 1.5 mm galvanized steel.

**Finish:** RAL 7035 structured powder coating.

**Delivery:** 2 vertical profiles, top and bottom profiles, and mounting material.

For enclosure		
H	W	Item no.
1800	600	MSFCP1806R5
1800	800	MSFCP1808R5
2000	600	MSFCP2006R5
2000	800	MSFCP2008R5
2200	600	MSFCP2206R5
2200	800	MSFCP2208R5



# Floor Standing Enclosures

## Accessories | Incoming

### Plain front panels, MSMBP

- Description:** Plain front panel for modular assemblies. It has a top and bottom bending to provide extra rigidity.
- Material:** 1.25 mm steel.
- Finish:** RAL 7035 structured powder coating.
- Delivery:** 1 piece with mounting material.
- Requirements:** To be assembled on MSFCP or on MSMSM / MSMSF.

H	W	Front panel dimensions		Item no.
		h	w	
50	600	49	503	MSMBP0506R5
50	800	49	703	MSMBP0508R5
100	600	99	503	MSMBP1006R5
100	800	99	703	MSMBP1008R5
150	600	149	503	MSMBP1506R5
150	800	149	703	MSMBP1508R5
200	600	199	503	MSMBP2006R5
200	800	199	703	MSMBP2008R5
250	600	249	503	MSMBP2506R5
250	800	249	703	MSMBP2508R5
300	600	299	503	MSMBP3006R5
300	800	299	703	MSMBP3008R5
400	600	399	503	MSMBP4006R5
400	800	399	703	MSMBP4008R5
450	600	449	503	MSMBP4506R5
450	800	449	703	MSMBP4508R5
500	600	499	503	MSMBP5006R5
500	800	499	703	MSMBP5008R5
600	600	599	503	MSMBP6006R5
600	800	599	703	MSMBP6008R5



## Accessories | Outgoing - Modular system

### Modular system frames, MSMSF

- Description:** Two single vertical profiles, which can be used both for front covers and assembly of components. A cost effective solution for panel builders, reducing assembly time, which also enables assembly outside the enclosure.
- Material:** 2 mm steel.
- Finish:** RAL 7035.
- Pack quantity:** 1 kit.
- Requirements:** To be assembled on MKSL-MCSL enclosures.

For enclosure		Item no.
H	W	
1800	600	MSMSF1806
1800	800	MSMSF1808
2000	600	MSMSF2006
2000	800	MSMSF2008
2200	600	MSMSF2206
2200	800	MSMSF2208



### Mounting plates, MSMPN

- Description:** Mounting plate for installation of breakers. Suitable for left and right hand connections.
- Material:** 1.5 mm galvanized steel.
- Pack quantity:** 1 piece with mounting material.
- Requirements:** To be assembled on MSFP, or on MSMSM/MSMSF with MSMPA01.

#### Plain

H	W	Mounting plate dimensions		Item no.
		h	w	
50	600	46	470	MSMPN0506
50	800	46	670	MSMPN0508
100	600	96	470	MSMPN1006
100	800	96	670	MSMPN1008
150	600	146	470	MSMPN1506
150	800	146	670	MSMPN1508
200	600	196	470	MSMPN2006
200	800	196	670	MSMPN2008
250	600	246	470	MSMPN2506
250	800	246	670	MSMPN2508
300	600	296	470	MSMPN3006
300	800	296	670	MSMPN3008
400	600	396	470	MSMPN4006
400	800	396	670	MSMPN4008
450	600	446	470	MSMPN4506
450	600	446	670	MSMPN4508
500	600	496	470	MSMPN5006
500	800	496	670	MSMPN5008
600	600	596	470	MSMPN6006
600	800	596	670	MSMPN6008
600	1000	596	870	MSMPN6010

#### Horizontal opening

H	W	Mounting plate dimensions		Item no.
		h	w	
100	600	96	470	MSMPN1006H
100	800	96	670	MSMPN1008H

#### Vertical opening

H	W	Mounting plate dimensions		Item no.
		h	w	
150	600	146	470	MSMPN1506V
150	800	146	670	MSMPN1508V
200	600	196	470	MSMPN2006V
200	800	196	670	MSMPN2008V
250	600	246	470	MSMPN2506V
250	800	246	670	MSMPN2508V
300	600	296	470	MSMPN3006V
300	800	296	670	MSMPN3008V
400	600	396	470	MSMPN4006V
400	800	396	670	MSMPN4008V
450	600	446	470	MSMPN4506V
450	800	446	670	MSMPN4508V
500	600	496	470	MSMPN5006V
500	800	496	670	MSMPN5008V
600	600	596	470	MSMPN6006V
600	800	596	670	MSMPN6008V



## Floor Standing Enclosures

### Accessories | Outgoing - Modular system

#### DIN rails, MSDR

**Description:** Cut to size DIN rail ready to be installed. The simplified panel design makes procurement easier and reduces assembly time.

**Material:** Galvanized steel.

**Pack quantity:** 5 pieces.

**Requirements:** To be assembled on MSFP with the holders MSADP or with the adjustable brackets MSMPA01, or on MSMSM / MSMSF with the fixed brackets MSMPF01 or with the adjustable brackets MSMPA01.

For enclosure	
W	Item no.
600	MSDR0600
800	MSDR0800



#### Fixed brackets, MSMPF01

**Description:** A bracket to mount a DIN-rail to allow for mounting of modular components in the modular system profiles. Cost effective solution for panel builders.

**Material:** 2.5 mm galvanized steel

**Pack quantity:** 1 pair

**Requirements:** To be assembled on MSMSM / MSMSF

Item no.
MSMPF01



#### Adjustable brackets, MSMPA01

**Description:** A bracket to mount a DIN-rail or mounting plate which is adjustable in depth to allow for mounting of components in different sizes in the desired position. Panel builders can hold less stock and engineer with fewer item numbers thanks to the adjustable depth design.

**Material:** 2.5 mm galvanized steel, zamak.

**Pack quantity:** 2 pairs.

**Requirements:** To be assembled on MSFP, or on MSMSM/MSMSF.

Item no.
MSMPA01



#### Click-in profiles, CLPK

**Description:** Universal profile for both depth and width fitting on the 25 mm DIN hole pattern of the enclosure's frame or in combination with the CLPF and VB profiles. The 75 mm wide profile is equipped with three rows of holes of which one is turned 90°. This makes it possible to mount the CLPF profiles in both orientations. The CLPK can be secured by the use of self tapping screws.

**Material:** 1.5 mm zinc plated steel.

**Pack quantity:** 4 profiles.

For enclosure		
W/D	Max. loading	Item no.
400	1600 N	CLPK400
600	1600 N	CLPK600
800	1200 N	CLPK800
1000	1200 N	CLPK1000



#### Mounting profiles, CLPF

**Description:** The CLPF profile system is a 40 mm wide and 25 mm high profile, which can be mounted in all directions on the enclosure's frame. It can also be used in combination with the CLPK and the VB profiles. By turning the profile it can be used as a standard CP20/40 profile in combination with GLM 40/6 sliding nuts, to mount installation material which needs adjusting in depth. The profiles, when mounted onto the enclosure's frame are flush with the enclosure's profiles. Two rows of hole patterns for cage nut fixing and self tapping screws are provided. For 90 mm wide profiles two profiles can be mounted next to each other.

**Material:** Zinc plated steel.

**Pack quantity:** 4 profiles including fixing accessories.

For enclosure				
H/W	W/D	Max. loading Horizontal C	Max. loading Horizontal []	Item no.
400	400	800 N	1000 N	CLPF400
600	600	800 N	1000 N	CLPF600
800	800	800 N	1000 N	CLPF800
1000	1000	800 N	1000 N	CLPF1000





# Floor Standing Enclosures

## Accessories | Outgoing - Modular system

### Adjustment profiles, APK

**Description:** Width profiles which allows for continuous adjustment of fixation cage nuts for components in height, depth and width. Panel builders can then fix any component in the desired position without machining.

**Material:** 2,5 mm galvanized steel.

**Pack quantity:** 2 pairs.

**Requirements:** To be assembled on CLPF depth profiles.



For enclosure		Item no.
W		
600		APK600
800		APK800

### Slotted front panels, MSMCP

**Description:** Slotted front panel for modular assemblies. Provided with one DIN rail per row for modular components. It has a top and bottom bending to provide extra rigidity.

**Material:** 1.25 mm steel.

**Finish:** RAL 7035 structured powder coating.

**Delivery:** 1 piece with mounting material.

**Requirements:** To be assembled on MSFCP, or on MSMSM / MSMSF.



H	W	No. of rows	DIN modules	Item no.
150	600	1	25	MSMCP1506R5
150	800	1	36	MSMCP1508R5
200	600	1	25	MSMCP2006R5
200	800	1	36	MSMCP2008R5
300	600	1	25	MSMCP3006-1R5
300	800	1	36	MSMCP3008-1R5
300	600	2	50	MSMCP3006-2R5
300	800	2	72	MSMCP3008-2R5
450	600	3	75	MSMCP4506R5
450	800	3	108	MSMCP4508R5
600	600	4	100	MSMCP6006R5
600	800	4	144	MSMCP6008R5

### Blanking plates for DIN slots, TB13G

**Description:** Blanking plate to cover the unused space in the DIN slots. Can be divided per half a module.

**Material:** Plastic.

**Finish:** RAL 7035.

**Pack quantity:** 10 pieces of blanking plate 13 mod. Overall length 234 mm.



Item no.
TB13G

### Plain front panels, MSMBP

**Description:** Plain front panel for modular assemblies. It has a top and bottom bending to provide extra rigidity.

**Material:** 1.25 mm steel.

**Finish:** RAL 7035 structured powder coating.

**Delivery:** 1 piece with mounting material.

**Requirements:** To be assembled on MSFCP or on MSMSM / MSMSF.



Front panel dimensions				
H	W	h	w	Item no.
50	600	49	503	MSMBP0506R5
50	800	49	703	MSMBP0508R5
100	600	99	503	MSMBP1006R5
100	800	99	703	MSMBP1008R5
150	600	149	503	MSMBP1506R5
150	800	149	703	MSMBP1508R5
200	600	199	503	MSMBP2006R5
200	800	199	703	MSMBP2008R5
250	600	249	503	MSMBP2506R5
250	800	249	703	MSMBP2508R5
300	600	299	503	MSMBP3006R5
300	800	299	703	MSMBP3008R5
400	600	399	503	MSMBP4006R5
400	800	399	703	MSMBP4008R5
450	600	449	503	MSMBP4506R5
450	800	449	703	MSMBP4508R5
500	600	499	503	MSMBP5006R5
500	800	499	703	MSMBP5008R5
600	600	599	503	MSMBP6006R5
600	800	599	703	MSMBP6008R5

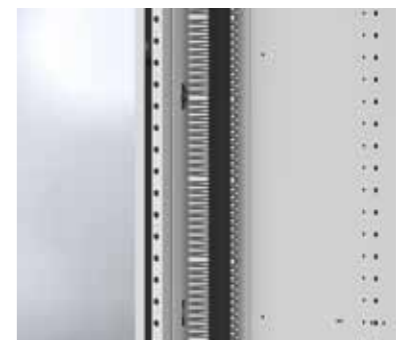
### Finger guards, MSFG

**Description:** Accessory to avoid the access to the live parts through the cable openings in the internal side panels and mounting plates.

**Material:** ABS

**Delivery:** 2 pieces, 93 mm.

Item no.
MSFG2000



# Floor Standing Enclosures

## Accessories | Outgoing - Fix system

### Internal side panels, MSPS

**Description:** Internal side panels to build up sections as from the enclosure frame. Frame hole pattern is needed in front, rear, top and bottom.  
**Material:** 1.5 mm galvanized steel.  
**Delivery:** 1 piece with mounting material.

For cables section

H	D	Side panel dimensions		Item no.
		h	w	
1800	300	1707	337	MSPS1803
1800	500	1707	537	MSPS1805
2000	300	1907	337	MSPS2003
2000	500	1907	537	MSPS2005
2200	300	2107	337	MSPS2203
2200	500	2107	537	MSPS2205

For incoming/outgoing sections

H	D	Side panel dimensions		Item no.
		h	w	
1800	600	1707	507	MSPS1806
1800	800	1707	707	MSPS1808
2000	600	1907	507	MSPS2006
2000	800	1907	707	MSPS2008
2200	600	2107	507	MSPS2206
2200	800	2107	707	MSPS2208

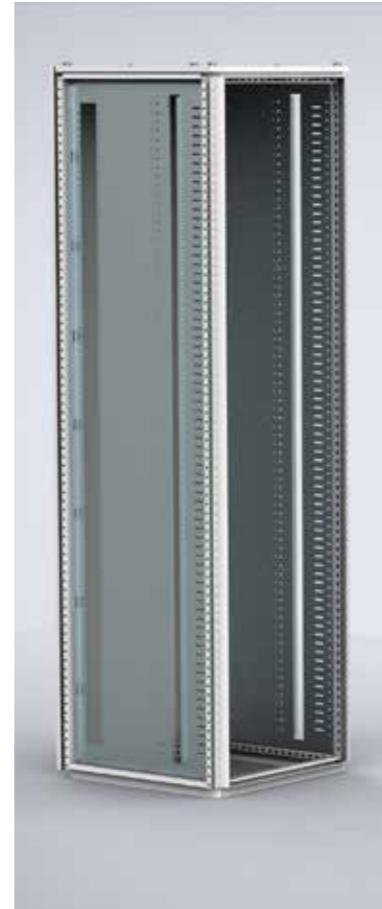
For incoming/outgoing sections with front opening

H	D	Side panel dimensions		Item no.
		h	w	
1800	600	1707	507	MSPS1806F
1800	800	1707	707	MSPS1808F
2000	600	1907	507	MSPS2006F
2000	800	1907	707	MSPS2008F
2200	600	2107	507	MSPS2206F
2200	800	2107	707	MSPS2208F

### Fix system vertical profiles, MSFP

**Description:** Vertical profiles to build up fix systems. It can be mounted with or without sidepanels MSPS. These profiles lets us to mount MCCBs in mounting plates MSMPN, or DIN rails for modular components with the accessory fix MSADP or adjustable MSMPA01. The busbar supports in the rear of the compartments, MSFH, mount directly to the profile.  
**Material:** 1.55 mm galvanized steel.  
**Delivery:** 2 pieces with mounting material.

For enclosure	
H	Item no.
1800	MSFP1800
2000	MSFP2000
2200	MSFP2200



### Mounting plates, MSMPN

**Description:** Mounting plate for installation of breakers. Suitable for left and right hand connections.  
**Material:** 1.5 mm galvanized steel.  
**Pack quantity:** 1 piece with mounting material.  
**Requirements:** To be assembled on MSFP, or on MSMSM/MSMSF with MSMPA01.

Plain

H	W	Mounting plate dimensions		Item no.
		h	w	
50	600	46	470	MSMPN0506
50	800	46	670	MSMPN0508
100	600	96	470	MSMPN1006
100	800	96	670	MSMPN1008
150	600	146	470	MSMPN1506
150	800	146	670	MSMPN1508
200	600	196	470	MSMPN2006
200	800	196	670	MSMPN2008
250	600	246	470	MSMPN2506
250	800	246	670	MSMPN2508
300	600	296	470	MSMPN3006
300	800	296	670	MSMPN3008
400	600	396	470	MSMPN4006
400	800	396	670	MSMPN4008
450	600	446	470	MSMPN4506
450	800	446	670	MSMPN4508
500	600	496	470	MSMPN5006
500	800	496	670	MSMPN5008
600	600	596	470	MSMPN6006
600	800	596	670	MSMPN6008
600	1000	596	870	MSMPN6010

Horizontal opening

H	W	Mounting plate dimensions		Item no.
		h	w	
100	600	96	470	MSMPN1006H
100	800	96	670	MSMPN1008H

Vertical opening

H	W	Mounting plate dimensions		Item no.
		h	w	
150	600	146	470	MSMPN1506V
150	800	146	670	MSMPN1508V
200	600	196	470	MSMPN2006V
200	800	196	670	MSMPN2008V
250	600	246	470	MSMPN2506V
250	800	246	670	MSMPN2508V
300	600	296	470	MSMPN3006V
300	800	296	670	MSMPN3008V
400	600	396	470	MSMPN4006V
400	800	396	670	MSMPN4008V
450	600	446	470	MSMPN4506V
450	800	446	670	MSMPN4508V
500	600	496	470	MSMPN5006V
500	800	496	670	MSMPN5008V
600	600	596	470	MSMPN6006V
600	800	596	670	MSMPN6008V



## Floor Standing Enclosures

### Accessories | Outgoing - Fix system

#### DIN rails, MSDR

**Description:** Cut to size DIN rail ready to be installed. The simplified panel design makes procurement easier and reduces assembly time.

**Material:** Galvanized steel.

**Pack quantity:** 5 pieces.

**Requirements:** To be assembled on MSFP with the holders MSADP or with the adjustable brackets MSMPA01, or on MSMSM / MSMSF with the fixed brackets MSMPF01 or with the adjustable brackets MSMPA01.



For enclosure	
W	Item no.
600	MSDR0600
800	MSDR0800

#### Holder for DIN rails, MSADP

**Description:** Accessory to fix the DIN rail to the MSFP mounting profiles at the proper depth to have the standard distance between the DIN rail and the front panels.

**Material:** Reinforced polyester

**Delivery:** 10 pieces with mounting material.



Item no.
MSADP10

#### Adjustable brackets, MSMPA01

**Description:** A bracket to mount a DIN-rail or mounting plate which is adjustable in depth to allow for mounting of components in different sizes in the desired position. Panel builders can hold less stock and engineer with fewer item numbers thanks to the adjustable depth design.

**Material:** 2.5 mm galvanized steel, zamak.

**Pack quantity:** 2 pairs.

**Requirements:** To be assembled on MSFP, or on MSMSM/MSMSF.



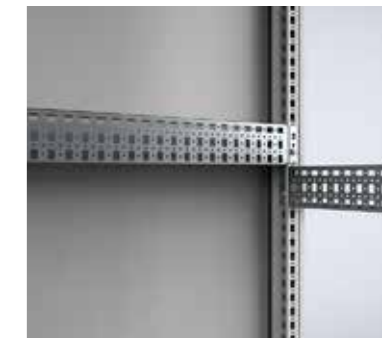
Item no.
MSMPA01

#### Click-in profiles, CLPK

**Description:** Universal profile for both depth and width fitting on the 25 mm DIN hole pattern of the enclosure's frame or in combination with the CLPF and VB profiles. The 75 mm wide profile is equipped with three rows of holes of which one is turned 90°. This makes it possible to mount the CLPF profiles in both directions. The CLPK can be secured by the use of self tapping screws.

**Material:** 1.5 mm zinc plated steel.

**Pack quantity:** 4 profiles.



For enclosure		
W/D	Max. loading	Item no.
400	1600 N	CLPK400
600	1600 N	CLPK600
800	1200 N	CLPK800
1000	1200 N	CLPK1000

#### Mounting profiles, CLPF

**Description:** The CLPF profile system is a 40 mm wide and 25 mm high profile, which can be mounted in all directions on the enclosure's frame. It can also be used in combination with the CLPK and the VB profiles. By turning the profile it can be used as a standard CP20/40 profile in combination with GLM 40/6 sliding nuts, to mount installation material which needs adjusting in depth. The profiles, when mounted onto the enclosure's frame are flush with the enclosure's profiles. Two rows of hole patterns for cage nut fixing and self tapping screws are provided. For 90 mm wide profiles two profiles can be mounted next to each other.

**Material:** Zinc plated steel.

**Pack quantity:** 4 profiles including fixing accessories.



For enclosure				
H/W	W/D	Max. loading Horizontal C	Max. loading Horizontal []	Item no.
400	400	800 N	1000 N	CLPF400
600	600	800 N	1000 N	CLPF600
800	800	800 N	1000 N	CLPF800
1000	1000	800 N	1000 N	CLPF1000

# Floor Standing Enclosures

## Accessories | Outgoing - Fix system

### Adjustment profiles, APK

**Description:** Width profiles which allows for continuous adjustment of fixation cage nuts for components in height, depth and width. Panel builders can then fix any component in the desired position without machining.

**Material:** 2.5 mm galvanized steel.

**Pack quantity:** 2 pairs.

**Requirements:** To be assembled on CLPF depth profiles.



For enclosure	
W	Item no.
600	APK600
800	APK800

### Front cover profiles, MSFCP

**Description:** Front frame built up by two vertical and two horizontal profiles. To be covered by front panels MSMBP or MSMCP.

**Material:** 1.5 mm galvanized steel.

**Finish:** RAL 7035 structured powder coating.

**Delivery:** 2 vertical profiles, top and bottom profiles, and mounting material.



For enclosure		
H	W	Item no.
1800	600	MSFCP1806R5
1800	800	MSFCP1808R5
2000	600	MSFCP2006R5
2000	800	MSFCP2008R5
2200	600	MSFCP2206R5
2200	800	MSFCP2208R5

### Slotted front panels, MSMCP

**Description:** Slotted front panel for modular assemblies. Provided with one DIN rail per row for modular components. It has a top and bottom bending to provide extra rigidity.

**Material:** 1.25 mm steel.

**Finish:** RAL 7035 structured powder coating.

**Delivery:** 1 piece with mounting material.

**Requirements:** To be assembled on MSFCP, or on MSMSM / MSMSF.



H	W	No. of rows	DIN modules	Item no.
150	600	1	25	MSMCP1506R5
150	800	1	36	MSMCP1508R5
200	600	1	25	MSMCP2006R5
200	800	1	36	MSMCP2008R5
300	600	1	25	MSMCP3006-1R5
300	800	1	36	MSMCP3008-1R5
300	600	2	50	MSMCP3006-2R5
300	800	2	72	MSMCP3008-2R5
450	600	3	75	MSMCP4506R5
450	800	3	108	MSMCP4508R5
600	600	4	100	MSMCP6006R5
600	800	4	144	MSMCP6008R5

### Blanking plates for DIN slots, TB13G

**Description:** Blanking plate to cover the unused space in the DIN slots. Can be divided per half a module.

**Material:** Plastic.

**Finish:** RAL 7035.

**Pack quantity:** 10 pieces of blanking plate 13 mod.. Overall length 234 mm.



Item no.
TB13G

# Floor Standing Enclosures

## Accessories | Outgoing - Fix system

### Plain front panels, MSMBP

**Description:** Plain front panel for modular assemblies. It has a top and bottom bending to provide extra rigidity

**Material:** 1.25 mm steel

**Finish:** RAL 7035 structured powder coating.

**Delivery:** 1 piece with mounting material.

Front panel dimensions				
H	W	h	w	Item no.
50	600	49	503	MSMBP0506R5
50	800	49	703	MSMBP0508R5
100	600	99	503	MSMBP1006R5
100	800	99	703	MSMBP1008R5
150	600	149	503	MSMBP1506R5
150	800	149	703	MSMBP1508R5
200	600	199	503	MSMBP2006R5
200	800	199	703	MSMBP2008R5
250	600	249	503	MSMBP2506R5
250	800	249	703	MSMBP2508R5
300	600	299	503	MSMBP3006R5
300	800	299	703	MSMBP3008R5
400	600	399	503	MSMBP4006R5
400	800	399	703	MSMBP4008R5
450	600	449	503	MSMBP4506R5
450	800	449	703	MSMBP4508R5
500	600	499	503	MSMBP5006R5
500	800	499	703	MSMBP5008R5
600	600	599	503	MSMBP6006R5
600	800	599	703	MSMBP6008R5



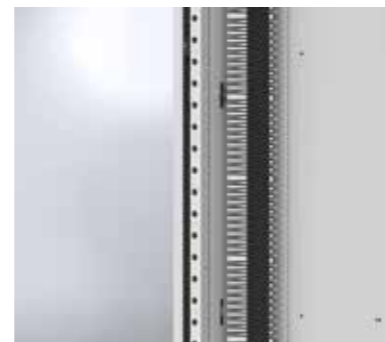
### Finger guards, MSFG

**Description:** Accessory to avoid the access to the live parts through the cable openings in the internal side panels and mounting plates.

**Material:** ABS

**Delivery:** 2 pieces, 93 mm.

Item no.
MSFG2000



### Internal segregation horizontal plates, MSIS

**Description:** Pre-sized horizontal separation plates between the mounting level and the front panels. Slides easily into place and let us to get Form 4 compartments for MCB's and MCCB's. No screws need.

**Material:** 3 mm reinforced polycarbonate.

**Delivery:** 1 piece.

For enclosure		Item no.
W		
600		MSIS600
800		MSIS800



### External segregation horizontal plates, MSES

**Description:** Pre-sized horizontal separation plates between the mounting level and the front door. Slides easily into place and let us to get Form 4 compartments for MCB's and MCCB's. No screws need.

**Material:** 3 mm reinforced polycarbonate.

**Delivery:** 1 piece.

For enclosure		Item no.
W		
600		MSES600
800		MSES800



### Cable entrance boxes, MSCE

**Description:** Steel cable entrance box which lets us to build up a system with the terminations to functional unit separated from each other, meeting the Form 4. With the MSCE each functional unit (compartment) has its own integral glanding facility.

**Material:** 1.25 mm galvanized steel.

**Delivery:** 1 piece, grommets for the cables holes, and mounting material.

H	Item no.
150	MSCE150
200	MSCE200
250	MSCE250
300	MSCE300



# Floor Standing Enclosures

## Accessories | Outgoing - Fix system

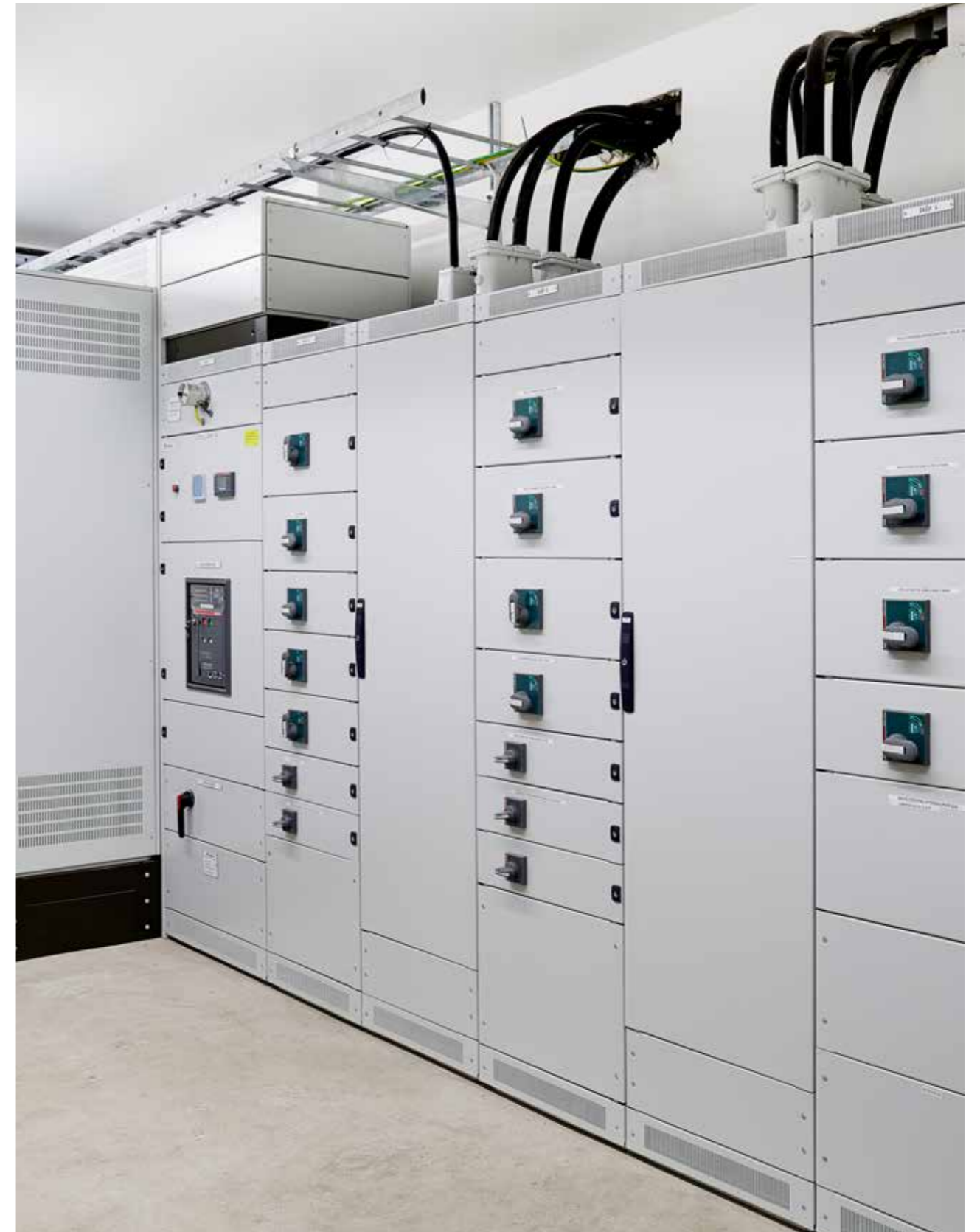
### Bracket measuring trafos , MSCEP

**Description:** Brackets to be fixed into the cable entrance box to mount the measuring equipment of the outgoing compartment.

**Material:** 2 mm galvanized steel

**Pack quantity:** 1 piece with mounting material

H	Item no.
150	MSCEP150
200	MSCEP200
250	MSCEP250



## Floor Standing Enclosures

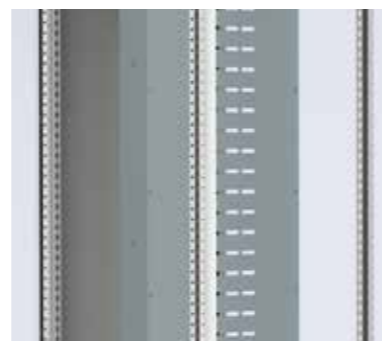
### Accessories | Outgoing - Plug-in system

#### Rear cover plates for plug-in sections, MSSB

**Description:** Rear cover plate to separate the plug-in sections from the plug-in busbars. It includes the profiles in which the rear plate is fixed, and in which the busbar holders must be fixed too.

**Material:** 3 mm reinforced polycarbonate and 2 mm galvanized steel.

**Delivery:** 1 rear panel, 2 vertical profiles to fix the back plate and busbar supports and mounting material.



For enclosure		Rear plate dimensions		Item no.
H	W	h	w	
1800	600	1797	506	MSSB1806
2000	600	1997	506	MSSB2006
2200	600	2197	506	MSSB2206

#### Compartments for plug-in connection, MSCP

**Description:** Compartment for plug-in connection to the MSBS vertical busbar placed behind the compartments.

**Material:** 2 mm galvanized steel

**Delivery:** 1 piece with mounting material



H	W	Item no.
150	600	MSCP01506
200	600	MSCP02006
250	600	MSCP02506
300	600	MSCP03006

#### Mounting plates for compartments, MSCM

**Description:** Mounting plate to be mounted in the plug-in compartment MSCP. The mounting plate has two vertical cable openings for the incoming, one in each size.

**Material:** 2 mm galvanized steel

**Delivery:** 1 piece, the fixing screws are included in the MSCP kit.



		Mounting plate dimensions		Item no.
H	W	h	w	
150	600	117	507	MSCM01506
200	600	167	507	MSCM02006
250	600	217	507	MSCM02506
300	600	267	507	MSCM03006

#### Top covers for plug-in compartments, MSCH

**Description:** Plate to cover the upper compartment. All the others compartments are covered by the bottom plate of the compartment above.

**Material:** 2 mm galvanized steel

**Delivery:** 1 piece with mounting material



		Top cover dimensions		Item no.
W	D	w	d	
600	300	510	283	MSCH0604

#### Cable entrance boxes, MSCE

**Description:** Steel cable entrance box which lets us to build up a system with the terminations to functional unit separated from each other, meeting the Form 4. With the MSCE each functional unit (compartment) has its own integral glanding facility.

**Material:** 1.25 mm galvanized steel

**Delivery:** 1 piece, grommets for the cables holes, and mounting material.



H	Item no.
150	MSCE150
200	MSCE200
250	MSCE250
300	MSCE300

#### Bracket measuring trafos , MSCEP

**Description:** Brackets to be fixed into the cable entrance box to mount the measuring equipment of the outgoing compartment.

**Material:** 2 mm galvanized steel

**Pack quantity:** 1 piece with mounting material



H	Item no.
150	MSCEP150
200	MSCEP200
250	MSCEP250

## Accessories | Cabling

### Separation plates for cable section, MSPM

**Description:** Separation plate to segregate the front space in the cable section from the busbar space. It include the profiles in which the separation plate is fixed, and in which the fixation cables profiles MSCFR / MSCFS must be fixed too.

**Material:** 3 mm reinforced polycarbonate and 1.5 mm galvanized steel.

**Pack quantity:** 2 vertical profiles to fix the separation plate and mounting material.

For enclosure		
H	W	Item no.
1800	400	MSPM1804
1800	400	MSPM1804E
1800	600	MSPM1806
1800	600	MSPM1806E
2000	400	MSPM2004
2000	400	MSPM2004E
2000	600	MSPM2006
2000	600	MSPM2006E
2200	400	MSPM2204
2200	400	MSPM2204E
2200	600	MSPM2206
2200	600	MSPM2206E

\* If cable section is installed between 2 outgoing sections, MSPMxxxE separation plates must be used



### Rear cable fixation profiles, MSCFR

**Description:** Profiles to fix the cables easily in the rear part of the cable section, the profiles must be fixed in the MSPM.

**Material:** 2 mm galvanized steel.

**Delivery:** 5 pieces with mounting material.

For enclosure		Item no
W		
400		MSCFR400
600		MSCFR600



### Side cable fixation profiles, MSCFS

**Description:** Profiles to fix the cables easily in the side part of the cable section, the profiles must be fixed in the MSPM.

**Material:** 2 mm galvanized steel.

**Delivery:** 5 pieces with mounting material.

For enclosure		Item no.
D		
600		MSCFS600
800		MSCFS800







# Floor Standing Enclosures

## Accessories | Busbar

### Compact busbar support, ECBS

**Description:** Busbar support up to 1600 A to be mounted horizontally or vertically. Mounts directly to the enclosure frame or with help of CLPF profiles. Available in single and double bar per phase for bar thickness 5 mm and only single bar per phase for bar thickness 10 mm, and width from 25 to 80 mm.

**Working temperature:** -40° C up to 130° C.

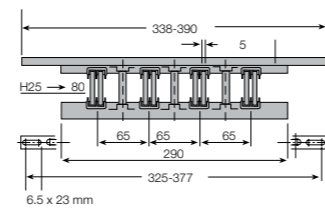
**Material:** Reinforced polyamide and steel. Halogen free.

**Delivery:** Busbar support with mounting material.

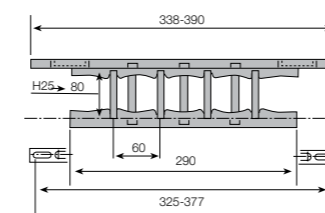


Item no.
ECBS205TN
ECBS110TN

		ECBS205TN						
	mm	Ipk KA Icc rms KA 1s						
		11	24	48	63	82	114	
		6,5	12	23	30	39	52	
1 bar per phase	25	5	1000	477	237	182	140	100
	30	5	1000	525	261	200	154	110
	40	5	1000	614	305	234	180	114
	50	5	1000	696	346	265	204	117
	63	5	1000	797	365	303	233	122
2 bars per phase	25	5	894	411	204	156	120	86
	30	5	1000	465	231	177	136	97
	40	5	1000	568	282	216	166	119
	50	5	1000	666	331	254	195	139
	63	5	1000	789	378	300	231	160
80	5	1000	944	382	356	276	169	



		ECBS110TN					
	mm	Ipk KA Icc rms KA 1s					
		11	24	48	63	82	
		6,5	12	23	30	39	
1 bar per phase	25	10	1000	918	456	349	269
	30	10	1000	1000	502	385	296
	40	10	1000	1000	512	451	314
	50	10	1000	1000	513	470	324
	60	10	1000	1000	516	481	336
	80	10	1000	1000	520	492	356



### Vertical rear busbar supports, MSFH

**Description:** Busbar supports up to 1600 A to be mounted vertically behind the fixed compartments. Mounts to the vertical profiles MSFP. Rated short-time withstand current up to 35 kA with rear supports and up to 50 kA with rear and front supports.

**Material:** Polycarbonate reinforced with 10% of glass material.

**Delivery:** 7 busbar supports for 3 phases and neutral, and mounting material.

For enclosure		Item no.
W		
600		MSFH06
800		MSFH08

\* The rated current is included in Table AD 3 of the EPS Manual.



### Vertical plug-in busbar supports, MSVH

**Description:** Busbar supports up to 1600 A to be mounted vertically behind the plug-in compartments. Rated short-time withstand current up to 35 kA with rear supports and up to 50 kA with rear and front supports. Mounts to the vertical profiles included in the rear cover plate for plug-in sections MSSB.

**Material:** Polycarbonate reinforced with 10% of glass material.

**Delivery:** 4 busbar support with mounting material.

Item no.
MSVH1800
MSVH2000
MSVH2200
MSVH1800F
MSVH2000F
MSVH2200F



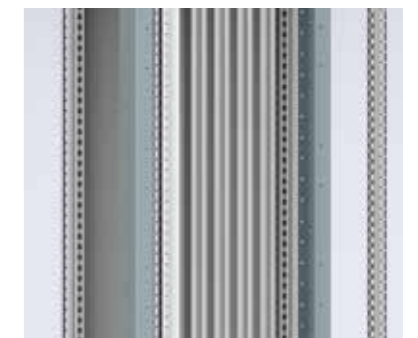
### Plug-in busbar, MSBS

**Description:** Vertical busbar to build up the plug-in system. The MSBS bars are fixed in the MSVH supports with standard bolts, washers and nuts. The rated current can be increased up to 2 x 1400 A if the incoming connection is in the middle.

**Material:** Tin plated aluminium

**Delivery:** 4 pieces of busbars

For enclosure	Mounting plate dimensions			Item no.
H	h	In (A)	Icw (kA)	
1800	1572	Up to 1400 A	Up to 50 kA	MSBS41418
2000	1772	Up to 1400 A	Up to 50 kA	MSBS41420
2200	1972	Up to 1400 A	Up to 50 kA	MSBS41422



## Accessories | Busbar

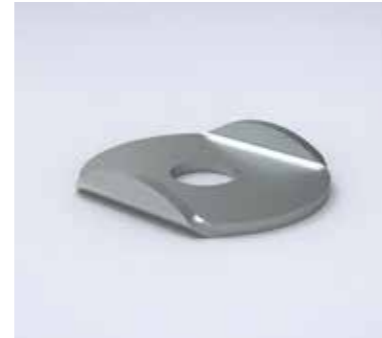
### Rear busbar support fixation, MSBF

**Description:** Saddle to fix the bars to the rear busbar support, with its special design helps us to fix properly the bars to the support. The bolts, washers and nuts must be ordered separately.

**Material:** 2 mm zinc plated steel.

**Delivery:** 20 pieces.

**Item no.**  
MSBF20



### Saddle for busbar connection, MSBC

**Description:** Saddle to make the bars connection, with its special design helps us to make the bars connection properly, making it easier. The bolts, washers and nuts must be operated separately.

**Material:** 2 mm zinc plated steel.

**Delivery:** 20 pieces.

**Item no.**  
MSBC20



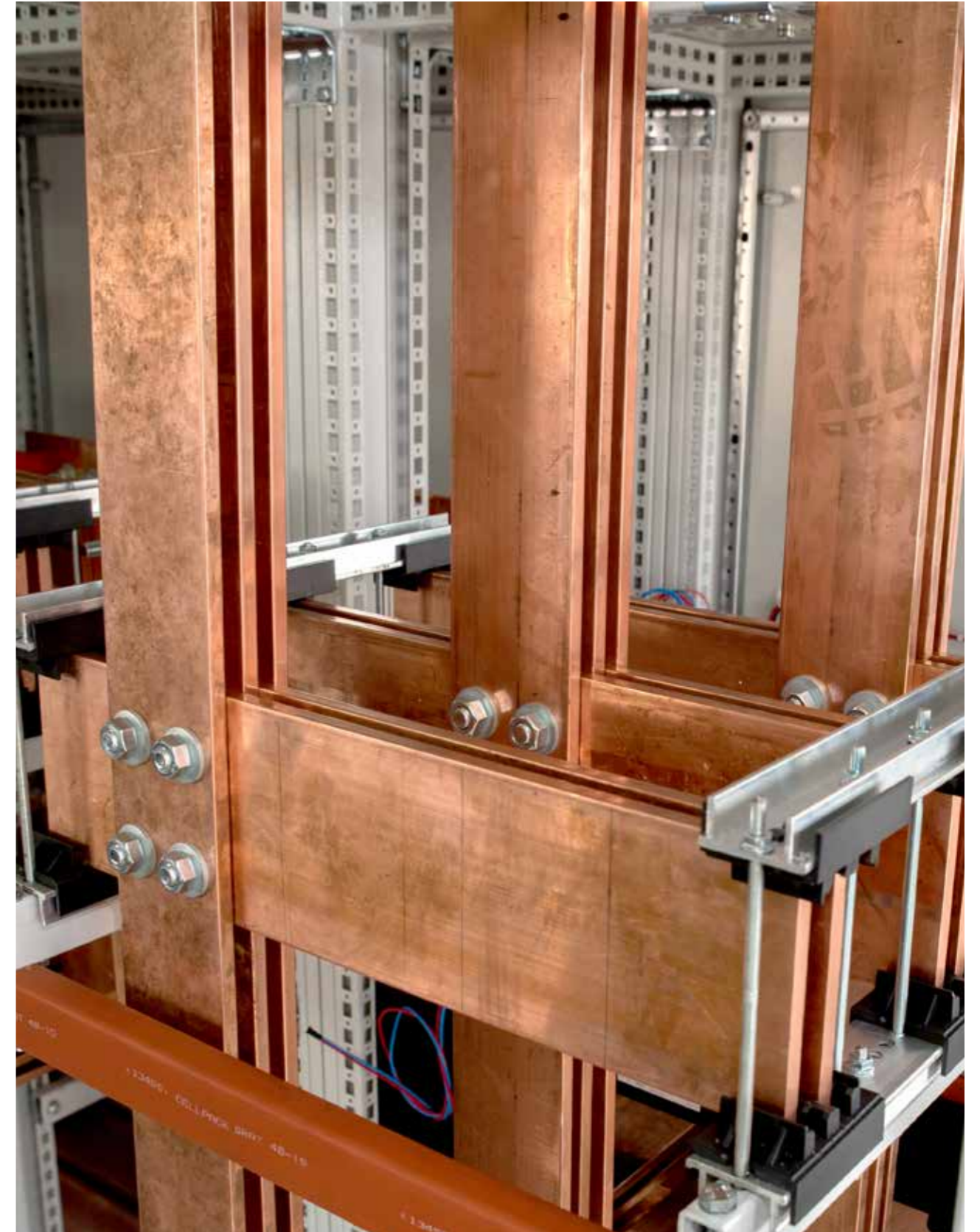
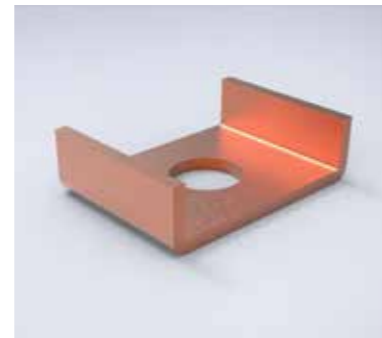
### Holder for busbar connection, MSBH

**Description:** Cooper holder for busbar connection, which guarantee a perfect connection between main busbar and secondary busbar.

**Material:** 2 mm cooper.

**Delivery:** 20 pieces.

**Item no.**  
MSBH20



## Accessories | Control

### Mounting plates, MP

- Description:** Standard mounting plate. It can also be mounted on the side of an enclosure by using MPS kit or slid in from the side with the MTS profile. For heavy loads in vibrating environments use mounting plate reinforcement profile MPR and MPE or MPEF brackets.
- Maximum load:** 6000 N.
- Material:** 3 mm galvanized steel.
- Mounting requirement:** Use MPA for mounting the MP inside the enclosure. Adjustable in depth with MPD accessory.
- Pack quantity:** 1 piece.

For enclosure		Mounting plate dimensions			Item no.
H	W	h	w		
1800	600	1694	494	MP1806	
1800	800	1694	694	MP1808	
1800	1000	1694	894	MP1810	
1800	1200	1694	1094	MP1812	
2000	600	1894	494	MP2006	
2000	800	1894	694	MP2008	
2000	1000	1894	894	MP2010	
2000	1200	1894	1094	MP2012	
2200	600	2094	494	MP2206	
2200	800	2094	694	MP2208	
2200	1000	2094	894	MP2210	
2200	1200	2094	1094	MP2212	



### Partial height mounting plates, MPP

- Description:** Mounted directly on the enclosure's frame or onto the click-in profiles (CLPK). Special design of the bracket allows one man mounting. Can be mounted in any height or depth position within the 25 mm hole pattern. Appropriate sizes can also be used on the sides of the enclosure.
- Material:** 3 mm galvanized steel.
- Pack quantity:** 1 plate with mounting accessories.
- Mounting requirement:** Add CLPK for depth adjustment.
- Note:** MPP can be mounted in both directions.

For enclosure				
H/W	W/H	h/w	w/h	Item no.
600	400	494	294	MPP0604
600	600	494	494	MPP0606
600	800	494	694	MPP0608
600	1000	494	894	MPP0610
800	400	694	294	MPP0804
800	800	694	694	MPP0808
1000	400	894	294	MPP1004
1000	800	894	694	MPP1008
1200	400	1094	294	MPP1204
1200	600	1094	494	MPP1206



### Mounting plate brackets, MPA

- Description:** To fix mounting plates in the enclosure, including brackets for depth adjustment in steps of 25 mm. Brackets are needed when an extra mounting plate is required or when the enclosure is ordered without mounting plate (PE).
- Material:** 3 mm zinc plated steel.
- Pack quantity:** 2 top brackets, 2 bottom sliding brackets and 2 adjustment brackets with mounting accessories.

Description	Item no.
	MPA06



Eldon has developed a new software tool for low voltage switchgear design for electrical engineering companies involved in the manufacturing of low-voltage switchgear.



With the help of the EPS Software, the design engineer can avoid any mistakes when choosing the right components and materials required to build the panel. Pre-defined groups of components can be arranged to reduce the work even more. Busbar size selection with the necessary number of busbar supports to comply with system requirements can also be defined in the Tool.

The Tool also supports thermal analysis to ensure that the temperature rise is not higher than recommended.

The cost calculation is speeded up as well since the Tool, together with the all documents needed for the quotation process, will generate an Excel-file with all items needed for the construction of the panel.

The tool allows for generation of different views of the panel to show what it will look like in the end. The views shown can be external with front covers and internal with the busbars, for example.

In addition, a layout plan may be created to define the fixation requirements for when the panel is installed in the field.

Take the opportunity now and run the **Eldon Power System Software** to:

- Make the design work of your switchgear project easier and smoother
- Ensure the right components and accessories are selected
- Get a list of equipment easily
- Get drawings in different views and a layout plan.



# Index

AC, Modular chassis	21	Cage nuts, CNM	82	DNG, Glazed doors	78	Fixed brackets, MSMPF01	94
Adapter gland plates, AFA	28	CBP, Plain bottom plates	66	DNMK, Door mounting kits	78	Fixed brackets, MSMPF01	36
ADC, Glazed doors with clear glass	23	CCE, External baying brackets	71	Document pocket, DRA	27	Fixing brackets, VBK	74
Adjustable brackets, MSMPA01	36	CCEH, Short external baying brackets	72	Document pocket, DRA	79	Front cover profiles, MSFCP	89
Adjustable brackets, MSMPA01	89	CCI, Internal baying brackets	71	Document pockets, DRB	80	Front cover profiles, MSFCP	102
Adjustable brackets, MSMPA01	94	CCM, Internal corner baying kit	71	Door horizontal profiles, DHP	26	Front/rear bottom frames, PCU	68
Adjustable brackets, MSMPA01	100	CDH, Horizontal dividers	72	Door mounting kits, DNMK	78	Front/rear plinths, P	22
Adjustment profiles, APK	96	CDHK, Horizontal dividers	73	Door stop, ADO	26	Front/rear plinths, PF	64
Adjustment profiles, APK	102	CDV, Vertical dividers	72	Door stop, DSTP	79	Front/rear top frames, MCU	69
ADO, Door stop	26	CED, Double protection cables entry	31	Door switch, ADSW	26	Gland plate combining gaskets, AGC	27
ADSW, Door switch	26	CES, Simple protection cables entry	31	Double protection cables entry, CED	31	Gland plates with knock-outs, AFK	29
ADT, Transparent doors	23	Click-in profiles, CLPK	86	DP, Partial doors	75	Glazed doors with clear glass, ADC	23
AFA, Adapter gland plates	28	Click-in profiles, CLPK	95	DPA, Cable space doors	77	Glazed doors, DNG	78
AFG, Ventilated gland plates with fly-net	28	Click-in profiles, CLPK	101	DPB, Vertical front panels	76	Handles, ALT	24
AFK, Gland plates with knock-outs	29	CLPF, Mounting profiles	87	DPC, Top and bottom panels	74	Hinges, MMH	25
AFR, Ventilated gland plates	27	CLPF, Mounting profiles	95	DPCV, Ventilated top and bottom panels	75	Holder for busbar connection, MSBH	116
AFV, Ventilated gland plates with filter	28	CLPF, Mounting profiles	101	DPP, Partial panels	76	Holders for DIN rails, MSADP	100
AGC, Gland plate combining gaskets	27	CLPK, Click-in profiles	86	DRA, Document pocket	27	Horizontal dividers, CDH	72
AL, Lifting eyes	32	CLPK, Click-in profiles	95	DRA, Document pocket	79	Horizontal dividers, CDHK	73
ALI, Inserts	24	CLPK, Click-in profiles	101	DRB, Document pockets	80	Inner doors, DI	79
ALL, Locks	24	CMB, Side mounting bars	82	DSTP, Door stop	79	Inserts, ALI	24
ALT, Handles	24	CNM, Cage nuts	82	Earthing cables, ECFA	83	Internal baying brackets, CCI	71
AMG, Depth adjustment kits	20	CNS, Screws for clip-on cage nuts	82	Earthing connections for frames, ECF	83	Internal corner baying kit, CCM	71
AMP, Mounting plates	20	Combinable floor standing enclosure, MCSL	52	Earthing connections for panels, ECP	83	Internal segregation horizontal plates, MSIS	105
AMTE, Depth adjustment bolts	20	Compact busbar support, ECBS	114	ECBS, Compact busbar support	114	Internal side panels, MSPS	84
APK, Adjustment profiles	96	Compartments for plug-in connection, MSCP	108	ECF, Earthing connections for frames	83	Internal side panels, MSPS	98
APK, Adjustment profiles	102	CPG, Plastic cable glands	30	ECFA, Earthing cables	83	Keys, LSK	25
ARF, Rain hoods	32	CVB, Ventilated bottom plates	67	ECP, Earthing connections for panels	83	LC, Lifting device	81
AW, Wall mounting brackets	21	CVK, Spacer kits	81	EHTC, Plastic gland plates	29	LE, Lifting eye bolts	81
Blanking plates for DIN slots, TB13G	37	CVR, Ventilation roofs	80	Enclosure pole fixation, EPF	21	Lifting device, LC	81
Blanking plates for DIN slots, TB13G	97	Depth adjustment bolts, AMTE	20	EPF, Enclosure pole fixation	21	Lifting eye bolts, LE	81
Blanking plates for DIN slots, TB13G	103	Depth adjustment kits, AMG	20	EUBS, Universal busbar supports	113	Lifting eyes, AL	32
Bracket measuring trafos , MSCEP	106	Depth dividing bars, VBD	73	External baying brackets, CCE	71	Lifting kit, MCUK	70
Bracket measuring trafos , MSCEP	109	DHP, Door horizontal profiles	26	External segregation horizontal plates, MSES	105	Locks, ALL	24
Cable anchorage glands, CAG	30	DI, Inner doors	79	Finger guards, MSFG	37	LSK, Keys	25
Cable entrance boxes, MSCE	105	DIN rails, MSDR	36	Finger guards, MSFG	98	LSMK, Multi key	25
Cable entrance boxes, MSCE	109	DIN rails, MSDR	94	Finger guards, MSFG	104	Main busbar supports horizontal, MSHS	112
Cable space doors, DPA	77	DIN rails, MSDR	100	Fix system vertical profiles, MSFP	87	MAS, Single door wall mounted enclosure	12
CAG, Cable anchorage glands	30	DN, Plain doors	77	Fix system vertical profiles, MSFP	98	MCSL, Combinable floor standing enclosure	52

# Index

MCU, Front/rear top frames	69	MSDR, DIN rails	94	PA, Side plinths	22	Side plinths, PS	65
MCUK, Lifting kit	70	MSDR, DIN rails	100	Padlocking, PLC	25	Side top frames, MCUP	70
MCUP, Side top frames	70	MSES, External segregation horizontal plates	105	Partial doors, DP	75	Simple protection cables entry, CES	31
MKSL, Semi-compact floor standing enclosure	46	MSFCP, Front cover profiles	89	Partial height mounting plates, MPP	86	Single door wall mounted enclosure, MAS	12
MMH, Hinges	25	MSFCP, Front cover profiles	102	Partial height mounting plates, MPP	119	Slotted front panels, MSMCP	37
Modular chassis, AC	21	MSFG, Finger guards	37	Partial panels, DPP	76	Slotted front panels, MSMCP	96
Modular system frames, MSMSF	92	MSFG, Finger guards	97	PCP, Plinth combining profiles	66	Slotted front panels, MSMCP	103
Modular system frames, MSMSM	34	MSFG, Finger guards	104	PCU, Front/rear bottom frames	68	Spacer kits, CVK	81
Mounting plate brackets, MPA	119	MSFH, Vertical rear busbar supports	115	PCUP, Side bottom frames	69	SPM, Side panels	70
Mounting plates for compartments, MSCM	108	MSFP, Fix system vertical profiles	87	PF, Front/rear plinths	64	TB13G, Blanking plates for DIN slots	37
Mounting plates, AMP	20	MSFP, Fix system vertical profiles	98	Plain bottom plates, CBP	66	TB13G, Blanking plates for DIN slots	96
Mounting plates, MP	118	MSHS, Main busbar supports horizontal	112	Plain doors, DN	77	TB13G, Blanking plates for DIN slots	103
Mounting plates, MSMPN	35	MSIS, Internal segregation horizontal plates	105	Plain front panels, MSMBP	38	Top and bottom panels, DPC	74
Mounting plates, MSMPN	88	MSMBP, Plain front panels	38	Plain front panels, MSMBP	90	Top covers for plug-in compartments, MSCH	109
Mounting plates, MSMPN	93	MSMBP, Plain front panels	90	Plain front panels, MSMBP	97	Transparent doors, ADT	23
Mounting plates, MSMPN	99	MSMBP, Plain front panels	97	Plain front panels, MSMBP	104	Universal busbar supports, EUBS	113
Mounting profiles, CLPF	87	MSMBP, Plain front panels	104	Plastic cable glands, CPG	30	VB, Vertical dividing bars	73
Mounting profiles, CLPF	95	MSMCP, Slotted front panels	37	Plastic gland plates, EHTC	29	VBD, Depth dividing bars	73
Mounting profiles, CLPF	101	MSMCP, Slotted front panels	96	PLC, Padlocking	25	VBK, Fixing brackets	74
MP, Mounting plates	118	MSMCP, Slotted front panels	103	Plinth combining profiles, PCP	66	Ventilated bottom plates, CVB	67
MPA, Mounting plate brackets	119	MSMPA01, Adjustable brackets	36	Plug-in busbar, MSBS	115	Ventilated front/rear plinths, PV	65
MPP, Partial height mounting plates	86	MSMPA01, Adjustable brackets	89	PS, Side plinths	65	Ventilated gland plates with filter, AFV	28
MPP, Partial height mounting plates	119	MSMPA01, Adjustable brackets	94	PV, Ventilated front/rear plinths	65	Ventilated gland plates with fly-net, AFG	28
MSADP, Holders for DIN rails	100	MSMPA01, Adjustable brackets	100	Rain hoods, ARF	32	Ventilated gland plates, AFR	27
MSBC, Saddle for busbar connection	116	MSMPF01, Fixed brackets	94	Rear busbar support fixation, MSBF	116	Ventilated shelves, SHC	85
MSBF, Rear busbar support fixation	116	MSMPF01, Fixed brackets	36	Rear cable fixation profiles, MSCFR	110	Ventilated top and bottom panels, DPCV	75
MSBH, Holder for busbar connection	116	MSMPN, Mounting plates	35	Rear cover plates for plug-in sections, MSSB	108	Ventilation roofs, CVR	80
MSBS, Plug-in busbar	115	MSMPN, Mounting plates	88	Saddle for busbar connection, MSBC	116	Vertical dividers, CDV	72
MSCC, Shelves for air circuit-breakers (ACB)	85	MSMPN, Mounting plates	93	Screws for clip-on cage nuts, CNS	82	Vertical dividing bars, VB	73
MSCE, Cable entrance boxes	105	MSMPN, Mounting plates	99	Semi-compact floor standing enclosure, MKSL	46	Vertical front panels, DPB	76
MSCE, Cable entrance boxes	109	MSMSF, Modular system frames	92	Separation plates for cable section, MSPM	110	Vertical plug-in busbar supports, MSVH	115
MSCEP, Bracket measuring trafos	106	MSMSM, Modular system frames	34	SHC, Ventilated shelves	85	Vertical rear busbar supports, MSFH	115
MSCEP, Bracket measuring trafos	109	MSPM, Separation plates for cable section	110	Shelves for air circuit-breakers (ACB), MSCC	85	Wall mounting brackets, AW	21
MSCFR, Rear cable fixation profiles	110	MSPS, Internal side panels	84	Short external baying brackets, CCEH	72		
MSCFS, Side cable fixation profiles	110	MSPS, Internal side panels	98	Side bottom frames, PCUP	69		
MSCH, Top covers for plug-in compartments	109	MSSB, Rear cover plates for plug-in sections	108	Side cable fixation profiles, MSCFS	110		
MSCM, Mounting plates for compartments	109	MSVH, Vertical plug-in busbar supports	115	Side mounting bars, CMB	82		
MSCP, Compartments for plug-in connection	108	Multi key, LSMK	25	Side panels, SPM	70		
MSDR, DIN rails	36	P, Front/rear plinths	22	Side plinths, PA	22		



In line with our policy of continuous development, we reserve the right to update our designs at any time. As a result, the product shown may not be identical to the one which is supplied, although it will correspond with the standards mentioned in the brochure. Whilst every care is taken to ensure that the information supplied is correct, we cannot accept any responsibility for errors or changes that may occur.





Power Distribution Catalogue 17, 2017.  
© Eldon Holding AB. All rights reserved.

[www.eldon.com](http://www.eldon.com)